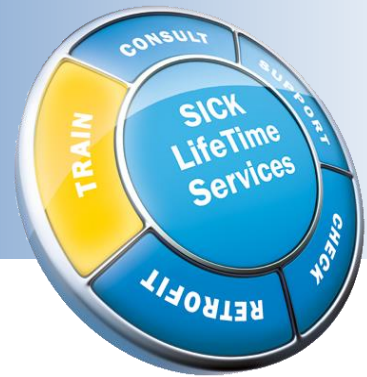


# CLV4xx to CLV6xx Migration Configuration Training

## SICK LifeTime Services Training Course



### Description

The course teaches how to use CLV Setup to interpret CLV4xx Series configuration and convert to CLV6xx Series configuration using SOPAS configuration software. Participants will also learn how to save and load configurations for both the CLV4xx and CLV6xx Series scanners.

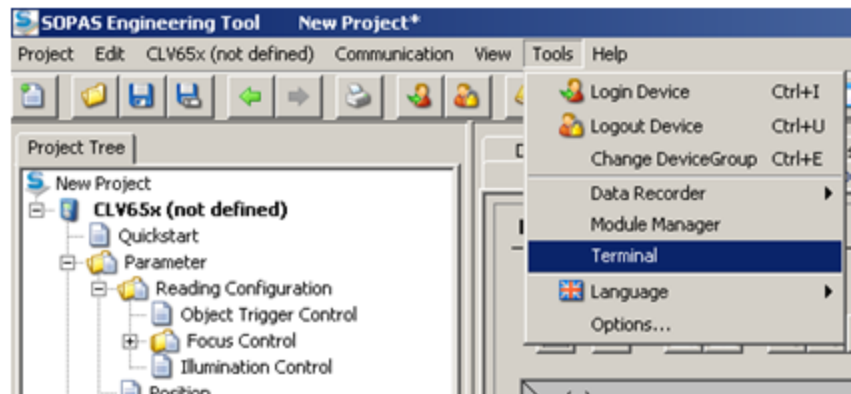
The instructor will share presentations and product demonstrations using either an online meeting tool, or when delivered at customer site or at the SICK North American Training Center, a hands on learning experience. Exercise tasks will be used to monitor participant's competency as the training progresses

### Objectives

- Examine CLV Setup software
- Examine CLV4xx scanner parameters
- Explore SOPAS configuration software
- Examine CLV6xx scanner parameters and how they relate to CLV4xx parameters
- Configure CLV6xx scanner parameters to match CLV4xx scanner parameters
- Use SOPAS to evaluate diagnostic information
- Review diagnostic parameters

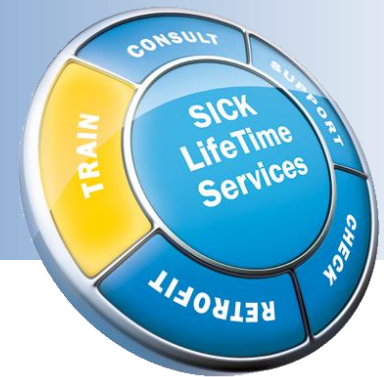
### Course Benefits

- Participants will learn how to quickly replace CLV4xx with CLV6xx Series scanners
- Participants will learn how to obtain and evaluate basic diagnostic information using SOPAS



# CLV4xx to CLV6xx Migration Configuration Training

## SICK LifeTime Services Training Course



### Target Audience

Technical staff, maintenance engineers, integrators and plant engineers

### Prerequisites

- CLV6xx Basic Configuration Training

### Recommended Additional Course

- None

### Duration

2 Hours

### Class Size

Maximum of 8

### Where Offered

- Customer site
- SICK North American Training Center
- Online meeting

### Format

Lecture, demonstration and hands-on

### Testing Available

Yes

### Customer Required Materials

For training at customer site, at a minimum, for every two participants:

- PC with SOPAS and CLVsetup software installed prior to attending
  - Minimum of two (2) 110 VAC outlets
- For virtual training:
- Online meeting tool installed (if necessary) prior to attending

SICK furnishes scanner hardware and accessories for hands-on

### Logistics

The following must be made available for the duration of the training:

- A suitable training room/area for the lecture portion of the training
- A projector with screen for use with a PC

Failure to have the customer required material and/or logistics available may lead to ineffective training and may result in the class not being able to achieve the described objectives and course benefits.

### Part Number

1065428

Travel expenses additional. Please contact SICK for information.

### SICK Training & Education

From product training, start-up assistance, and engineering and consulting services – SICK provides the necessary support before and after field installation through an established network of field personnel. Training, service and support programs from SICK help you reach your goals with our innovative, cost-effective solutions.

SICK offers several types of training programs to help you learn more about our innovative products and systems. Many of our training modules offer hands-on, real-world application examples and problem-solving experiences. Please visit our website at <http://www.sickusa.com> for more information.