



AHS/AHM36

Compact absolute encoder with IO-Link, CANopen, SAE-J1939 or SSI interface

SICK
Sensor Intelligence.

Advantages



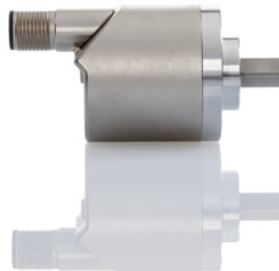
For encoders, flexibility is key

In order to provide maximum flexibility in the design of the mechanical interface, the AHS/AHM36 encoders are available with three different flange types (face mount flange, servo flange, blind hollow shaft), each with five different shaft diameters. Various assembly hole patterns are available in the face mount flange. A range of different pitch hole diameters are covered by the flexible stator coupling on the blind hollow shaft. And last but not least, a range of adapters guarantees compatibility with almost all absolute encoders with typical 60 mm flange designs. With the rotatable male connector or cable connection, the AHS/AHM36 can be integrated into the application in even the most limited of spaces and reduces the number of encoder variants when different installation situations are required.

Quick replacement for permanent benefit



Various assembly hole patterns in the face mount flange



AHS/AHM36 with M12 male connector, rotated in axial direction



With the rotatable male connector or cable connection, the AHS/AHM36 can be integrated into the application in even the most limited of spaces and reduces the number of encoder variants when different installation situations are required



Due to their compact size, the various flange types, adapter flanges and assembly hole patterns as well as the rotatable male connector or cable connection, the AHS/AHM36 devices can be integrated into virtually any application



Encoders for rough environments

The solution for applications with particularly harsh ambient conditions is AHS/AHM36 stainless steel Inox encoders. The housing, flange, shaft and stator coupling are made entirely of stainless steel (1.4305). Enclosure rating IP69K ensures additional impact protection which protects the shaft sealing ring installed in the encoder from the water jet of the shock blower.



AHS/AHM36 Inox with blind hollow shaft and cable connection



AHS/AHM36 Inox with face mount flange and M12 male connector



AHS/AHM36 Inox devices offer high resistance to environmental influences. With the IP69K enclosure rating, the encoders are suitable for use in machines that are regularly cleaned with high-pressure cleaners.



Advantages with IO-Link

IO-Link is a point-to-point communication protocol for connecting intelligent sensors and actuators within an automation network. SOPAS ET – the configuration software from SICK – allows IO-Link devices such as the AHS/AHM36 IO-Link to be easily visualized and parameterized. AHS/AHM36 IO-Link can be connected to any IO-Link master. The IO-Link offers a lot of benefits, e.g. automated storage of device parameters, unique device identification and the use of cost-efficient unshielded standard cables. In the Advanced and Inox versions, the AHS/AHM36 encoders offer extensive IO-Link functions, such as providing and storing diagnostic data (temperature, operating time, etc.), a configurable input and output pin, and integrated Smart Tasks, e.g. for length measurement. Thanks to their remote intelligence, these encoders provide the prerequisites for successful integration in more extensive edge computing concepts used for applications in Industry 4.0 and Smart Factory implementation.

Special versions of the AHS/AHM36 IO-Link include so-called Smart Tasks which enables them to make decentralized decisions and also carry them out autonomously. They take care of functions at the superordinate automation level, thereby improving response times because they reduce the communication load over the Ethernet and fieldbus networks. A wide variety of applications in which length measurement plays an important role can be designed more efficiently using Smart Tasks:

“Length measurement and trigger” Smart Task

- The IO-Link encoder measures and/or monitors the length of objects based on defined limit values, and outputs a signal when the length falls above or below these limits, for example in sorting processes in conveyor belt applications.
- The IO-Link encoder outputs a trigger when a pre-defined length has been reached. This Smart Task is used, for example, for cutting processes in the packaging and timber processing industries.

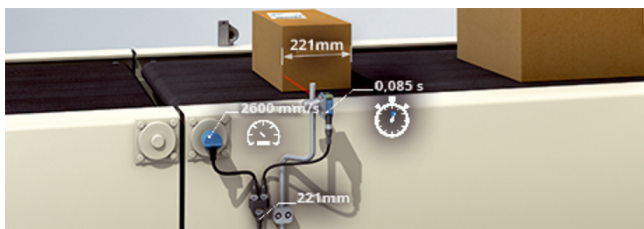


The AHS/AHM36 IO-Link Advanced and AHS/AHM36 IO-Link Inox encoders provide countless diagnostic data such as temperature values and operating hour counters

Thanks to remote intelligence, the AHS/AHM36 IO-Link can be successfully integrated into more comprehensive edge computing concepts when implementing Industry 4.0 and the Smart Factory



The IO-Link interface enables cost-effective and easy integration of AHS/AHM36 devices into Ethernet and fieldbus networks. The provision and saving of diagnostic data, a configurable input and output pin and integrated Smart Tasks offer the user countless additional benefits.



Measurement of object lengths and gaps between objects

An absolute encoder measures the speed of the belt. In combination with a photoelectric retro-reflective sensor and the integrated Smart Task on the encoder, the system precisely measures the length of objects as well as the spaces between them on the conveyor belt. The values obtained are made available immediately as process data via IO-Link. This enables objects to be easily and efficiently sorted based on their length. Using several IO-Link devices together with the Sensor Integration Gateway reduces the costs and enables efficient monitoring of the entire warehousing system thanks to real-time monitoring.



Length measurement of packaging film

The AHS/AHM36 IO-Link Advanced absolute encoder, in combination with a print mark sensor, measures the exact length of packaging film. With the help of the integrated A30 Smart Task, after a set length value passes through, a trigger signal can be output with which the downstream cutting system is controlled for singulation of packaging films. Direct length measurement in the encoder also works precisely and reliably when conveying speeds change.

The Smart Task application enables the encoder to make decisions remotely and execute them autonomously. The encoder therefore takes care of functions at the superordinate automation level, thereby improving response times because it reduces the communication load over the Ethernet and fieldbus networks.

In addition, the AHS/AHM36 offers extensive IO-Link functionalities, such as providing and storing diagnostic data (temperature, operating time, etc.) as well as a configurable input and output pin. The encoder provides valuable information, e.g. for process optimization and condition monitoring.



Advantages of CANopen, SAE J1939 and SSI

The three communication interfaces CANopen, SAE J1939 and SSI, with which the AHS/AHM36 encoders are available, also offer many advantages.

The position, speed and current temperature process data is output via the CANopen and SAE J1939 interfaces. AHS/AHM36 CANopen additionally communicates diagnostic data, such as maximum speed, minimum and maximum temperature as well as operating time. AHS/AHM36 CANopen and AHS/AHM36 SAE J1939 can be configured either via the engineering tool of the respective controller, or via the PGT-12-Pro hand-held programming tool from SICK.

The programmable AHS/AHM36 SSI devices can be used both via the SICK SOPAS engineering tool or via the PGT-10-Pro hand-held programming tool. Various parameters such as the resolution, counting direction and code type can be customized according to the application. Even the structure of the SSI protocol to be output can be adapted so that the AHS/AHM36 encoders are compatible with virtually any SSI encoder.



In addition to the position and speed, AHS/AHM36 CANopen and AHS/AHM36 SAE J1939 can also output the current operating temperature of the encoder as process data. AHS/AHM36 CANopen can also communicate additional diagnostic data

AHS/AHM36 CANopen, AHS/AHM36 SAE J1939 and AHS/AHM36 SSI can be parameterized easily and comprehensively via a hand-held programming tool

AHS/AHM36 SSI encoders can also be parameterized using the PC-based SICK SOPAS engineering tool



AHS/AHM36 CANopen, AHS/AHM36 SAE J1939 and AHS/AHM36 SSI can be parameterized individually, making it possible to adjust them flexibly to nearly any application. Thanks to the compact, hand-held programming tools, this is done independently and without the installation of hard- or software.



Technical data overview

Encoder design	Singleturn / Multiturn (depends on variant)										
Shaft type	Solid shaft, Servo flange Solid shaft, face mount flange Blind hollow shaft Special version										
Shaft diameter	<table border="0"> <tr> <td style="padding-right: 20px;">Solid shaft, Servo flange</td> <td>6 mm With flat 8 mm With flat 10 mm With flat 1/4" With flat 3/8" With flat 6 mm for adaption on 1.25 m wire draw ¹⁾</td> </tr> <tr> <td>Solid shaft, face mount flange</td> <td>6 mm With flat 8 mm With flat 10 mm With flat 3/8" With flat 1/4" With flat 10 mm With flat ²⁾</td> </tr> <tr> <td>Blind hollow shaft</td> <td>6 mm Front clamp 8 mm Front clamp 10 mm Front clamp 3/8" Front clamp 1/4" Front clamp</td> </tr> <tr> <td>Special version</td> <td>Front clamp</td> </tr> </table>	Solid shaft, Servo flange	6 mm With flat 8 mm With flat 10 mm With flat 1/4" With flat 3/8" With flat 6 mm for adaption on 1.25 m wire draw ¹⁾	Solid shaft, face mount flange	6 mm With flat 8 mm With flat 10 mm With flat 3/8" With flat 1/4" With flat 10 mm With flat ²⁾	Blind hollow shaft	6 mm Front clamp 8 mm Front clamp 10 mm Front clamp 3/8" Front clamp 1/4" Front clamp	Special version	Front clamp		
Solid shaft, Servo flange	6 mm With flat 8 mm With flat 10 mm With flat 1/4" With flat 3/8" With flat 6 mm for adaption on 1.25 m wire draw ¹⁾										
Solid shaft, face mount flange	6 mm With flat 8 mm With flat 10 mm With flat 3/8" With flat 1/4" With flat 10 mm With flat ²⁾										
Blind hollow shaft	6 mm Front clamp 8 mm Front clamp 10 mm Front clamp 3/8" Front clamp 1/4" Front clamp										
Special version	Front clamp										
Connection type	Male connector, M12, 4-pin, universal Cable, 4-wire, universal Male connector, M12, 5-pin, universal Cable, 5-wire, universal Male connector, M12, 8-pin, universal Cable, 8-wire, universal Special version										
Communication interface	IO-Link CANopen SSI SAE J1939 (depends on variant)										
Number of steps per revolution (max. resolution)	<table border="0"> <tr> <td style="padding-right: 20px;">IO-Link, IO-Link V1.1, programmable</td> <td>4,096 (12 bit) 16,384 (14 bit)</td> </tr> <tr> <td>CANopen, programmable</td> <td>16,384 (14 bit) 4,096 (12 bit)</td> </tr> <tr> <td>SSI, non programmable</td> <td>4,096 (12 bit) 16,384 (14 bit) 8,192 (13 bit) 3,600 512 (9 bit) 360 2,048 (11 bit) 720 1,024 (10 bit)</td> </tr> <tr> <td>SSI, programmable</td> <td>16,384 (14 bit) 4,096 (12 bit)</td> </tr> <tr> <td>SAE J1939, programmable</td> <td>4,096 (12 bit) 16,384 (14 bit)</td> </tr> </table>	IO-Link, IO-Link V1.1, programmable	4,096 (12 bit) 16,384 (14 bit)	CANopen, programmable	16,384 (14 bit) 4,096 (12 bit)	SSI, non programmable	4,096 (12 bit) 16,384 (14 bit) 8,192 (13 bit) 3,600 512 (9 bit) 360 2,048 (11 bit) 720 1,024 (10 bit)	SSI, programmable	16,384 (14 bit) 4,096 (12 bit)	SAE J1939, programmable	4,096 (12 bit) 16,384 (14 bit)
IO-Link, IO-Link V1.1, programmable	4,096 (12 bit) 16,384 (14 bit)										
CANopen, programmable	16,384 (14 bit) 4,096 (12 bit)										
SSI, non programmable	4,096 (12 bit) 16,384 (14 bit) 8,192 (13 bit) 3,600 512 (9 bit) 360 2,048 (11 bit) 720 1,024 (10 bit)										
SSI, programmable	16,384 (14 bit) 4,096 (12 bit)										
SAE J1939, programmable	4,096 (12 bit) 16,384 (14 bit)										

¹⁾ For adapting to 1.25 m Ecoline wire draw mechanism; only available for multiturn variants.

²⁾ For use with the adapters 2072298 and 2072295.

Max. resolution (number of steps per revolution x number of revolutions)	
IO-Link, IO-Link V1.1, programmable	12 bit x 12 bit (4,096 x 4,096) 14 bit x 12 bit (16,384 x 4,096)
CANopen, programmable	14 bit x 12 bit (16,384 x 4,096) 12 bit x 12 bit (4,096 x 4,096) 13 bit x 12 bit (8,192 x 4,096)
SSI, non programmable	13 bit x 12 bit (8,192 x 4,096) 12 bit x 12 bit (4,096 x 4,096) 14 bit x 12 bit (16,384 x 4,096) 9 bit x 12 bit (512 x 4,096) 10 bit x 12 bit (1,024 x 4,096) 8 bit x 12 bit (256 x 4,096) 14 bit x 12 bit (16,384 x 2,048) 11 bit x 12 bit (2,048 x 4,096)
SSI, programmable	14 bit x 12 bit (16,384 x 4,096) 13 bit x 12 bit (8,192 x 4,096) 12 bit (4,176 x 4,096)
SAE J1939, programmable	12 bit x 12 bit (4,096 x 4,096) 14 bit x 12 bit (16,384 x 4,096)
Programmable/configurable	Over PLC-Engineering-Tool Over SOPAS Over handheld programming tool (depends on variant)
Operating temperature range	-40 °C ... +100 °C (depends on variant)
Enclosure rating	IP65 (IEC 60529) IP66 (IEC 60529) IP67 (IEC 60529) IP69K (IEC 60529)

¹⁾ For adapting to 1.25 m Ecoline wire draw mechanism; only available for multiturn variants.

²⁾ For use with the adapters 2072298 and 2072295.

Product description

AHS/AHM36 absolute encoders set standards when it comes to mechanical adaptation, communication and resistance to environmental influences. With their rotatable male connector or cable connection as well as various mounting hole patterns and adapter flanges, these encoders are suitable for nearly any application. The IO-Link, CANopen, SAE J1939 and SSI interfaces enable easy integration into various control environments. Encoder configuration can be adapted to individual needs using various tools. The rugged, reliable, fully magnetic sensor system provides a maximum resolution of 14 bits (singleturn) or 26 bits (multiturn). Due to the stainless steel design and enclosure rating IP69K, the Inox versions are suitable for use under very harsh ambient conditions.



reddot award 2014
winner

At a glance

- 36 mm absolute encoder with max. 26 bits (singleturn: 14 bits, multiturn: 12 bits)
- Face mount/servo flange, blind hollow shaft
- Rotatable male connector or cable connection
- IO-Link, CANopen, SAE J1939, SSI interface with programmable parameterization
- Diagnostic functions
- Stainless steel (Inox versions)
- Enclosure rating up to IP67 or IP69K

Your benefits

- Simple mechanical installation thanks to the rotatable male connector or cable connection and various mounting hole patterns and shafts
- Easy integration into various control environments with IO-Link, CANopen, SAE J1939 and SSI interfaces
- Intelligent diagnostic functions evaluate maintenance intervals for the entire system
- Thanks to the rugged, reliable, fully magnetic sensors, they can also be used in harsh environments
- High resistance to ambient influences due to stainless steel design and IP69K enclosure rating (Inox versions)
- Space-saving and cost-effective design
- High performance at a cost-efficient price

Fields of application

Measures the absolute position in various industries, machines and equipment, including automated guided vehicle systems (AGV systems), industrial trucks, commercial vehicles, packaging machines, logistics applications, agricultural and forestry machines, construction and mining machines, special and municipal vehicles

- 1) Additional mechanical interfaces can be implemented using flange adapters, see attachment suggestions.
- 2) Permissible shaft load lower than specified in the technical data.
- 3) Only for Multiturn encoder versions.
- 4) Enclosure rating on shaft side always IP65.
- 5) Only for Advanced and Inox type.
- 6) CANopen, SAE J1939 communication interface.
- 7) IO-Link communication interface.
- 8) SSI communication interface, NRTL certification is only valid for operating temperatures of - 40 ° C to + 85 ° C.
- 9) The universal cable outlet is positioned so that it is possible to lay it without bends in a radial or axial direction.
- 10) See "Increments per revolution" table.
- 11) CANopen, SAE J1939 communication interface: Increments per revolution and resolution can be programmed via control or hand-held programming tool; IO-Link communication interface: Increments per revolution and resolution can be programmed via IO-Link master or SOPAS; SSI communication interface: Increments per revolution and resolution can be programmed via SOPAS or hand-held programming tool.
- 12) See "Resolution" table.
- 13) IO-Link Advanced device with additional Smart Task functionality, only available with multiturn variants.
- 14) IO-Link communication interface: Increments per revolution and resolution can be programmed via IO-Link master or SOPAS.

Number of steps per revolution (more upon request)

	AHS36B / AHM36B	AHS36A/AH-M36A/AHS36I/AHM36I
Non-programmable (for SSI communication interface)	00256	00256
	00360	00360
	00512	00512
	00720	00720
	01024	01024
	02048	02048
	03600	03600
	04096	04096
	-	08192
-	16384	
Programmable (via CANopen, SAE J1939, IO-Link and SSI communication interface, can be programmed)	00001 ... 04096	00001 ... 16384

Resolution (available upon request)

	AHS36B / AHM36B	AHS36A/AH-M36A/AHS36I/AHM36I
Non-programmable (for SSI communication interface)	08x12	08x12
	09x12	09x12
	10x12	10x12
	11x12	11x12
	12x12	12x12
	-	13x12
	-	14x12
Programmable (via CANopen, SAE J1939, IO-Link and SSI communication interface, can be programmed)	00x00 ... 12x12	00x00 ... 14x12

SICK AT A GLANCE

SICK is one of the leading manufacturers of intelligent sensors and sensor solutions for industrial applications. A unique range of products and services creates the perfect basis for controlling processes securely and efficiently, protecting individuals from accidents and preventing damage to the environment.

We have extensive experience in a wide range of industries and understand their processes and requirements. With intelligent sensors, we can deliver exactly what our customers need. In application centers in Europe, Asia and North America, system solutions are tested and optimized in accordance with customer specifications. All this makes us a reliable supplier and development partner.

Comprehensive services complete our offering: SICK LifeTime Services provide support throughout the machine life cycle and ensure safety and productivity.

For us, that is “Sensor Intelligence.”

WORLDWIDE PRESENCE:

Contacts and other locations –www.sick.com