



IDM161-411S RS-232 Kit

IDM

MOBILE HANDHELD SCANNERS

SICK
Sensor Intelligence.



Ordering information

Type	part no.
IDM161-411S RS-232 Kit	6080747

Included in delivery: Power supply unit (1), IDM161-411S (1), Base station (1), Connection cable (1), Rechargeable battery (1)

Other models and accessories → www.sick.com/IDM



Detailed technical data

Features

Application	Industrial application
Version	Standard Range
Scanner design	Wireless variant
Light source	LED, Visible, Red, 630 nm
Reading distance	20 mm ... 850 mm
Scanning frequency	≤ 500 Hz
Code resolution	≥ 0.076 mm

Mechanics/electronics

Supply voltage	3.7 V DC ¹⁾
Current consumption	Operation: 180 mA Standby: 80 mA
Housing color	Blue, gray
Enclosure rating	IP65
Weight	220 g, incl. rechargeable battery
Dimensions (L x W x H)	104 mm x 76.3 mm x 176 mm

¹⁾ Rechargeable battery operation.

Performance

Readable code structures	1D codes, Stacked
Bar code types	Code 39, Code 39 Full ASCII, Code 32, Code 128, GS1-128, Codabar, Code 11, Code 93, GS1 DataBar, Standard and Industrial 2 of 5, Interleaved & Matrix 2 of 5, IATA, UPC / EAN / JAN, UPC / EAN / JAN (with addition), Telepen, MSI/Plessey, UK/Plessey, Australian Post, China Post, German Post, US Planet, US Postnet, British Post, Intelligent Mail, Japan Post, Korea Post, Dutch KIX Post, Posi LAPA 4 State Code
Stacked code types	PDF417, MicroPDF417, Composite Code
Battery power	Over 60,000 scans with full battery

Code buffer	80,000 Codes (EAN)
--------------------	--------------------

Interfaces

Ethernet	✓ , TCP/IP
Type of fieldbus integration	Optional, over external connection module CDF600-2
PROFINET	✓
Type of fieldbus integration	Optional over external fieldbus module CDF600-2
Function	PROFINET Single Port, PROFINET Dual Port
EtherCAT®	✓
Type of fieldbus integration	Optional over external fieldbus module CDF600
Serial	✓ , RS-232 TTL
PROFIBUS DP	✓
Type of fieldbus integration	Optional over external fieldbus module CDF600-2
Bluetooth	✓
Remark	Bluetooth™ V4.0, 2.402 ... 2.4830 GHz
Function	Wireless operating range up to 100 m (free view), batch function for expansion of the wireless radius, up to seven scanners communicate with one base station
Optical indicators	2 LEDs (good read, charge of battery , radio connection status)
Acoustic indicators	Beeper, can be switched off
Vibration	Yes
Configuration software	IDM Setup Tool

Ambient data

Shock resistance	50 drops from 2 m height on concrete
Ambient operating temperature	-20 °C ... +50 °C
Storage temperature	-40 °C ... +70 °C
Relative humidity	± 95 %, Non-condensing
Ambient light immunity	100,000 lx

General notes

Items supplied	The rechargeable battery is included with delivery
Note	Not free of paint wetting impairment substances.

Certificates

EU declaration of conformity	✓
UK declaration of conformity	✓
ACMA declaration of conformity	✓
China RoHS	✓
Information according to Art. 3 of Data Act (Regulation EU 2023/2854)	✓

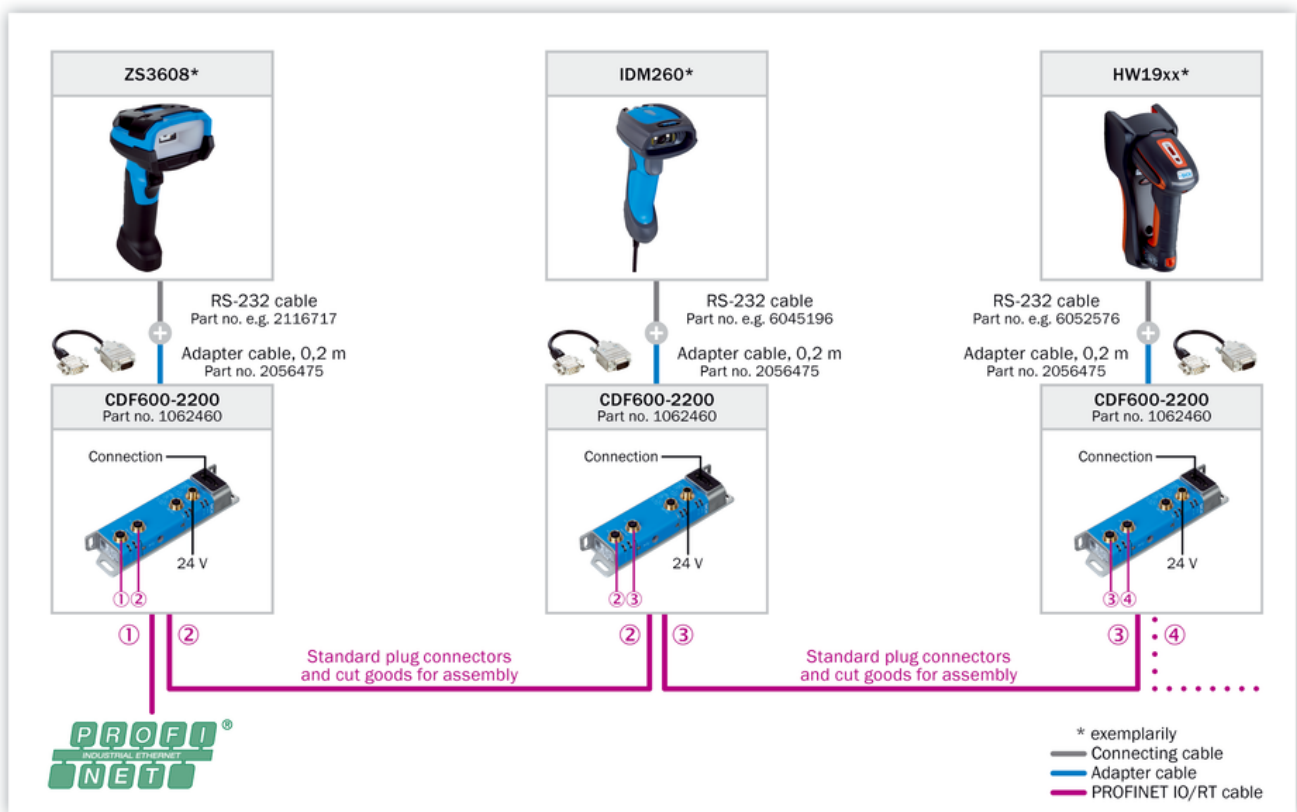
Classifications

ECLASS 5.0	27280101
ECLASS 5.1.4	27280101
ECLASS 6.0	27280101
ECLASS 6.2	27280101

ECLASS 7.0	27280101
ECLASS 8.0	27280101
ECLASS 8.1	27280101
ECLASS 9.0	27280101
ECLASS 10.0	27280101
ECLASS 11.0	27280101
ECLASS 12.0	27280101
ETIM 5.0	EC002550
ETIM 6.0	EC002550
ETIM 7.0	EC002550
ETIM 8.0	EC002550
UNSPSC 16.0901	43211701

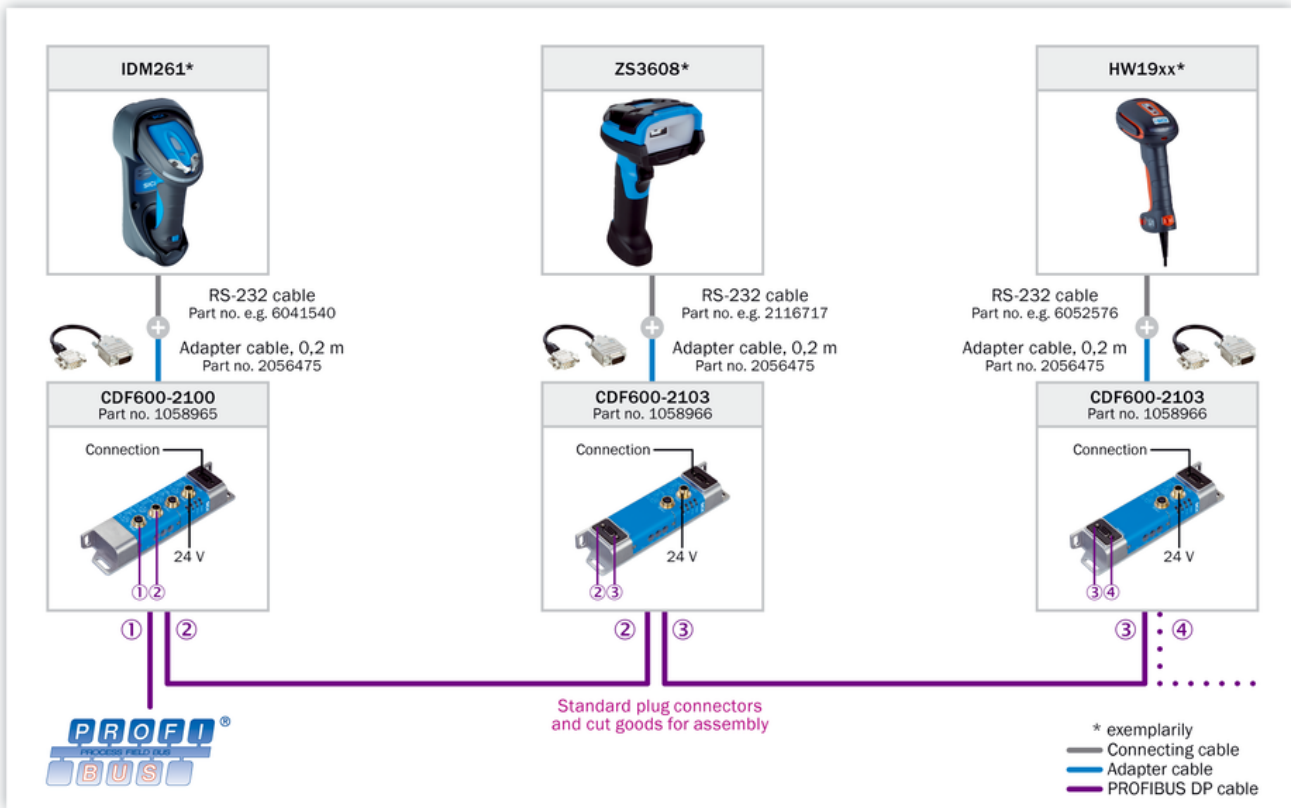
Connection diagram PROFINET IO/RT

PROFINET IO/RT



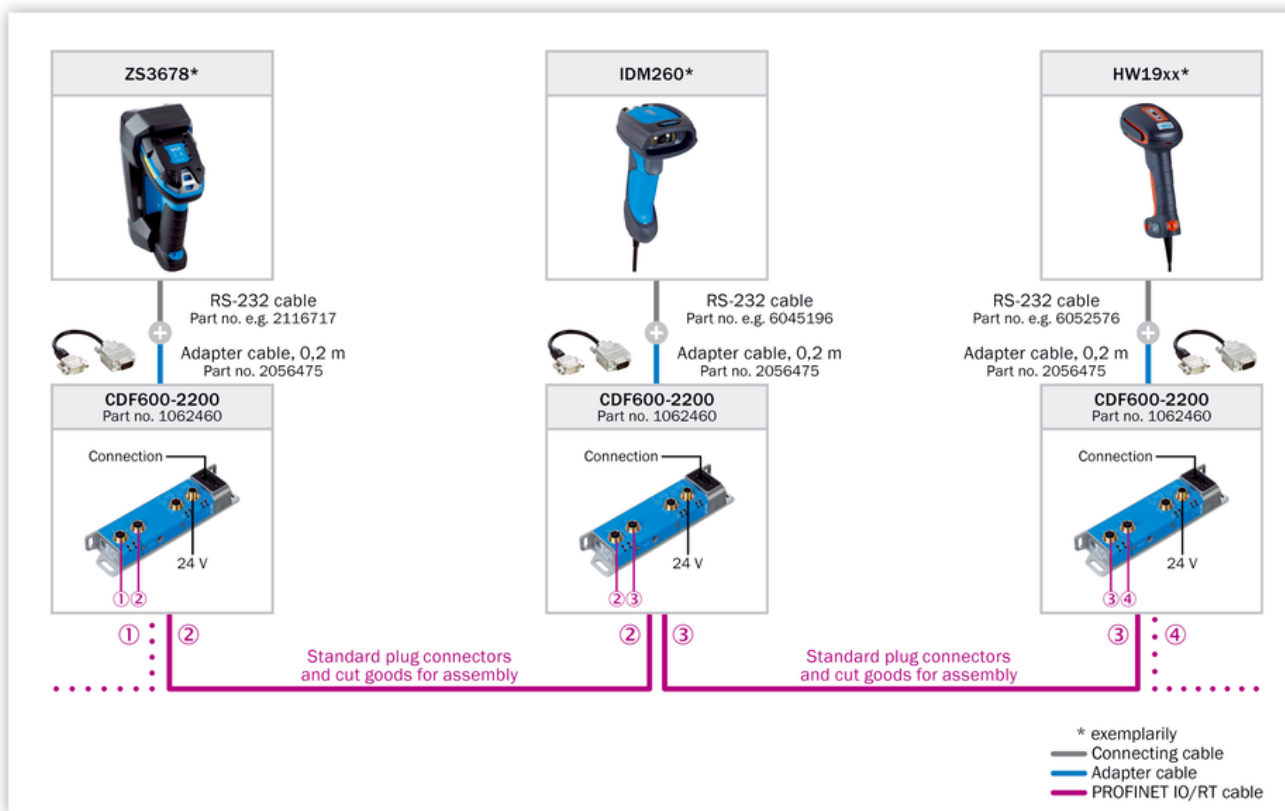
Connection diagram PROFIBUS DP

PROFIBUS DP



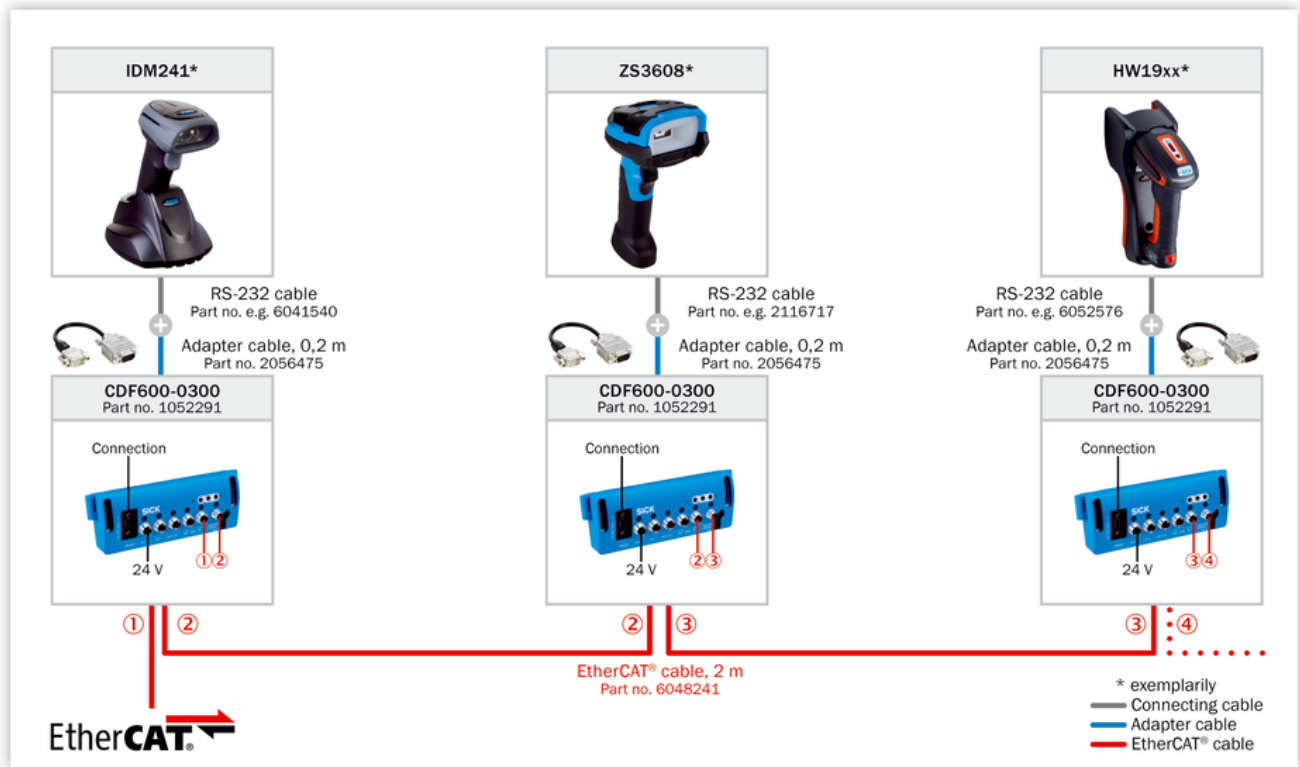
Connection diagram Ethernet TCP/IP

Ethernet TCP/IP



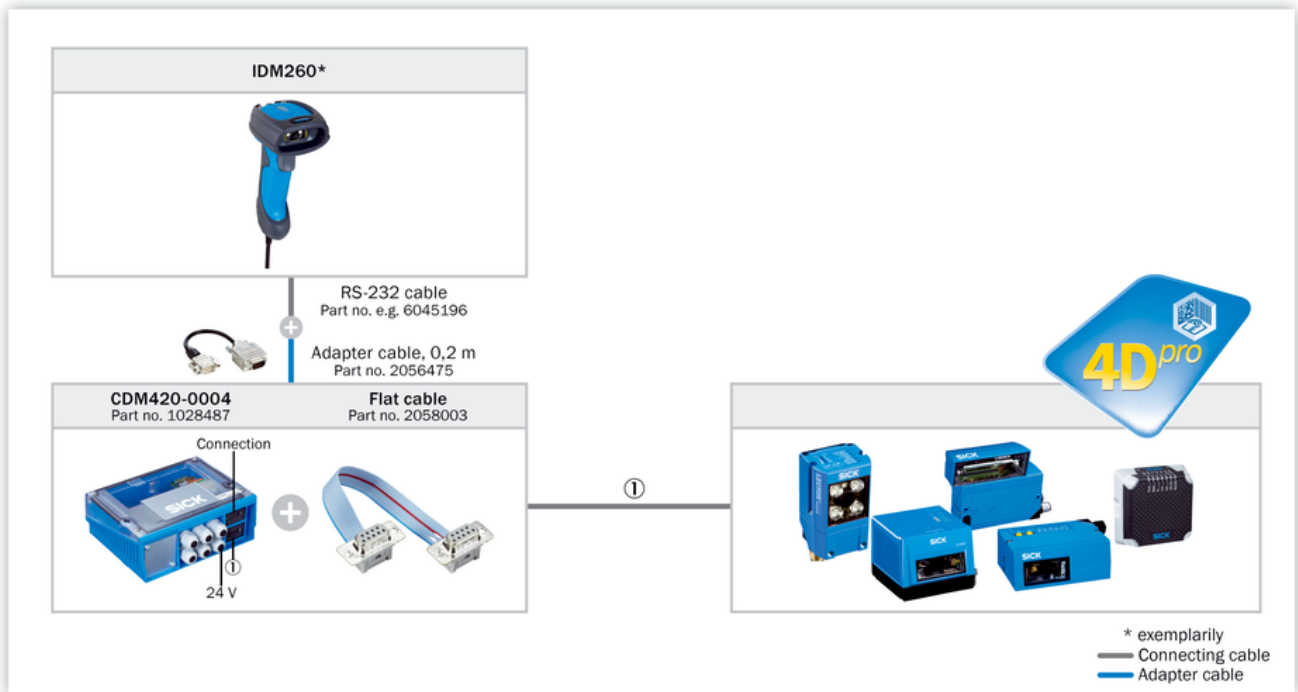
Connection diagram EtherCAT®

EtherCAT®



Connection diagram AUX looping

Looping-in via AUX



Selection Guide



*) For EtherNet/IP third party gateway is required from e.g. Comtrol or HMS (requires local sourcing).

SICK AT A GLANCE

SICK is one of the leading manufacturers of intelligent sensors and sensor solutions for industrial applications. A unique range of products and services creates the perfect basis for controlling processes securely and efficiently, protecting individuals from accidents and preventing damage to the environment.

We have extensive experience in a wide range of industries and understand their processes and requirements. With intelligent sensors, we can deliver exactly what our customers need. In application centers in Europe, Asia and North America, system solutions are tested and optimized in accordance with customer specifications. All this makes us a reliable supplier and development partner.

Comprehensive services complete our offering: SICK LifeTime Services provide support throughout the machine life cycle and ensure safety and productivity.

For us, that is “Sensor Intelligence.”

WORLDWIDE PRESENCE:

Contacts and other locations –www.sick.com