

UHF Transponder, square, on-metal, global

RFID transponder

RFID

SICK
Sensor Intelligence.



Ordering information

Type	Part no.
UHF Transponder, square, on-metal, global	6052186

Other models and accessories → www.sick.com/RFID_transponder

Detailed technical data

Features

Type	Hardtag	
Frequency band	UHF (860 MHz ... 960 MHz)	
Carrier frequency	865 MHz ... 928 MHz	
RFID standard	EPCglobal UHF Class 1 Generation 2, ISO/IEC 18000-6 C	
Read range	RFU61x	10 cm ¹⁾
	RFU62x	40 cm ¹⁾
	RFU63x/RFU65x	200 cm ¹⁾
Special features	On Metal ²⁾	
IC type	Impinj Monza 4QT	
Memory capacity (UII / user memory)	128/512 Bit	
IC write cycle	≤ 100,000	
IC data retention time	< 50 years	

¹⁾ Typical value; actual value depends on environmental conditions.

²⁾ For optimal performance the transponder must be mounted directly onto metal. The metal surface must be of at least the same size as the transporter.

Mechanics/electronics

Housing	Plastic
Housing color	Gray
Enclosure rating	IP68
Weight	+ 22 g
Dimensions (L x W x H)	27 mm x 27 mm x 6 mm
Hole	3.5 mm
Design	Rectangular
Mounting method	Screws, Rivets

Ambient data

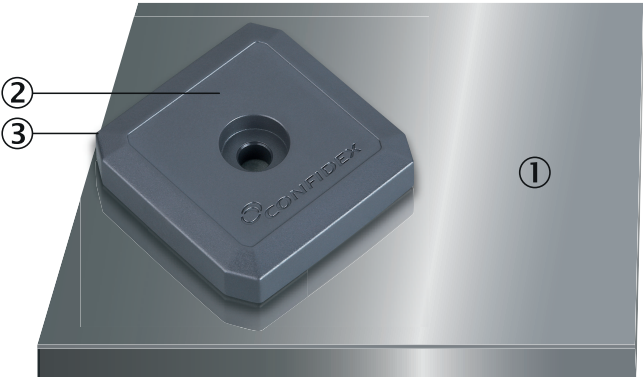
Ambient operating temperature	-35 °C ... +85 °C ¹⁾
Storage temperature	-35 °C ... +85 °C

¹⁾ Max. temperature at which the RFID transponder can interact with the RFID read/write device.

Classifications

ECLASS 5.0	27280402
ECLASS 5.1.4	27280402
ECLASS 6.0	27280402
ECLASS 6.2	27280402
ECLASS 7.0	27280402
ECLASS 8.0	27280402
ECLASS 8.1	27280402
ECLASS 9.0	27280402
ECLASS 10.0	27280402
ECLASS 11.0	27280402
ECLASS 12.0	27280402
ETIM 6.0	EC002998
ETIM 7.0	EC002998
ETIM 8.0	EC002998
UNSPSC 16.0901	52161523

Assembly note



- ① Leave the mounting surface in this area near to the transponder free. Free surface should be metal.
- ② Mounting on even metal surface with full contact of the underside of the transponder on the metal.
- ③ Position the top left corner of the transponder near to the edge of the mounting surface.

Recommended services

Additional services → www.sick.com/RFID_transponder

	Type	Part no.
Commissioning		
<ul style="list-style-type: none">• Product area: RFID• Range of services: Inspection of connection, alignment, optimization of parameters of the RFU/RFH as well as tests, Setup of previously defined functions of reading configuration, data processing and network, interfaces and inputs and outputs• Travel expenses: The prices do not include travel costs such as hotel, flight, travel time and expenses.• Duration: Additional work will be invoiced separately	Commissioning RFU/RFH	1610018
Maintenance		
<ul style="list-style-type: none">• Product area: RFID• Range of services: Inspection, analysis and restoring of defined functions, Checking and adjustment of reading configuration, data processing, network, interfaces and inputs and outputs as well as operating data• Duration: Additional work will be invoiced separately• Travel expenses: The prices do not include travel costs such as hotel, flight, travel time and expenses.	Maintenance RFU/RFH	1611424

SICK AT A GLANCE

SICK is one of the leading manufacturers of intelligent sensors and sensor solutions for industrial applications. A unique range of products and services creates the perfect basis for controlling processes securely and efficiently, protecting individuals from accidents and preventing damage to the environment.

We have extensive experience in a wide range of industries and understand their processes and requirements. With intelligent sensors, we can deliver exactly what our customers need. In application centers in Europe, Asia and North America, system solutions are tested and optimized in accordance with customer specifications. All this makes us a reliable supplier and development partner.

Comprehensive services complete our offering: SICK LifeTime Services provide support throughout the machine life cycle and ensure safety and productivity.

For us, that is “Sensor Intelligence.”

WORLDWIDE PRESENCE:

Contacts and other locations –www.sick.com