

HF transponder, disk

HF transponders

RFID TRANSPONDERS

SICK
Sensor Intelligence.



Ordering information

| Type | part no. |
|----------------------|----------|
| HF transponder, disk | 6043514 |

Other models and accessories → www.sick.com/HF_transponders

Detailed technical data

Features

| | |
|--------------------------------------|--|
| Product segment | RFID transponders, RFID |
| Product | HF transponders |
| Scope | Marking of non-metal parts that are exposed to high temperatures, liquids and chemicals, high storage capacity for production history data |
| Specialty | High Temperature, High Memory |
| Frequency band | HF (13.56 MHz) |
| Design | Round |
| Housing material | PA 6 |
| Ambient operating temperature | -20 °C ... +85 °C ¹⁾ |
| Storage temperature | -40 °C ... +90 °C |
| Application temperature | + 140 °C, 100 h, 1 ²⁾ |
| Housing color | Black |
| IC type | Fujitsu MB89R118 |
| Storage capacity | 16,000 Bit (250 x 8 Byte) (User Memory) |
| IC write cycle | ≤ 10,000,000,000 |
| IC data retention time | < 10 years |
| Mounting method | Screws, Rivets |
| Diameter | 30 mm |
| Weight | + 9.5 g |
| Reading range | |
| | RFH505 2 cm ³⁾ |
| | RFH510 4 cm ³⁾ |
| | RFH515 4.5 cm ³⁾ |
| | RFH620 8 cm ³⁾ |
| | RFH630 13 cm ³⁾ |

¹⁾ Max. temperature at which the RFID transponder can interact with the RFID read/write device.

²⁾ Max. temperature the RFID transponder can withstand [maximum temperature; duration; cycles]. For optimal performance, the transponders should completely cool off before a new temperature cycle is started.

³⁾ Typical value; actual value depends on environmental conditions.

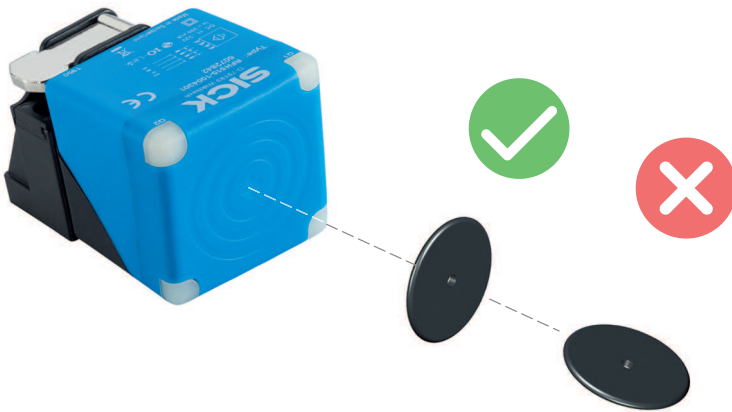
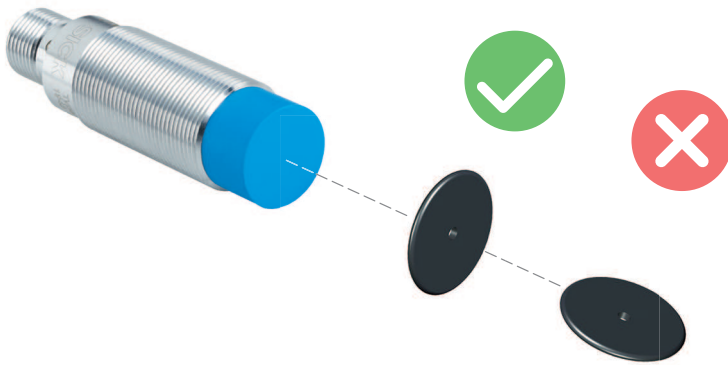
Classifications

| | |
|-----------------------|----------|
| ECLASS 5.0 | 27280401 |
| ECLASS 5.1.4 | 27280401 |
| ECLASS 6.0 | 27280401 |
| ECLASS 6.2 | 27280401 |
| ECLASS 7.0 | 27280401 |
| ECLASS 8.0 | 27280401 |
| ECLASS 8.1 | 27280402 |
| ECLASS 9.0 | 27280402 |
| ECLASS 10.0 | 27280402 |
| ECLASS 11.0 | 27280402 |
| ECLASS 12.0 | 27280402 |
| ETIM 5.0 | EC002593 |
| ETIM 6.0 | EC002998 |
| ETIM 7.0 | EC002998 |
| ETIM 8.0 | EC002998 |
| UNSPSC 16.0901 | 52161523 |

Instruction for installation



Instruction for installation



SICK AT A GLANCE

SICK is one of the leading manufacturers of intelligent sensors and sensor solutions for industrial applications. A unique range of products and services creates the perfect basis for controlling processes securely and efficiently, protecting individuals from accidents and preventing damage to the environment.

We have extensive experience in a wide range of industries and understand their processes and requirements. With intelligent sensors, we can deliver exactly what our customers need. In application centers in Europe, Asia and North America, system solutions are tested and optimized in accordance with customer specifications. All this makes us a reliable supplier and development partner.

Comprehensive services complete our offering: SICK LifeTime Services provide support throughout the machine life cycle and ensure safety and productivity.

For us, that is “Sensor Intelligence.”

WORLDWIDE PRESENCE:

Contacts and other locations –www.sick.com