



# WLL190T-2M434S01

WLL190

FIBER-OPTIC SENSORS

**SICK**  
Sensor Intelligence.



Illustration may differ



### Ordering information

Type	part no.
WLL190T-2M434S01	6042524

Other models and accessories → [www.sick.com/WLL190](http://www.sick.com/WLL190)

### Detailed technical data

#### Features

<b>Device type</b>	Fiber-optic amplifier
<b>Device type detail</b>	Base unit <sup>1)</sup>
<b>Dimensions (W x H x D)</b>	10.5 mm x 34.8 mm x 68.9 mm
<b>Housing design (light emission)</b>	Rectangular
<b>Sensing range max.</b>	0 m ... 4 m (Through-beam system) <sup>2) 3)</sup>
<b>Sensing range</b>	0 mm ... 480 mm, Proximity system <sup>4) 5)</sup> 0 m ... 2 m, Through-beam system <sup>6)</sup>
<b>Focus</b>	Approx. 65° <sup>7)</sup>
<b>Type of light</b>	Visible red light
<b>Light source</b>	LED <sup>8)</sup>
<b>Angle of dispersion</b>	Approx. 65° <sup>7)</sup>
<b>Wave length</b>	650 nm
<b>Adjustment</b>	Menu-controlled Single teach-in button Cable
<b>Indication</b>	Display

<sup>1)</sup> Up to 15 expansion units can be connected.

<sup>2)</sup> Sensing range at response time 2 ms. Reduction at shorter response time (see LL3/ WLL190T-2 table).

<sup>3)</sup> LL3-TB02 and tip adapter LL3-TA01.

<sup>4)</sup> Object with 90% remission (based on standard white DIN 5033). Sensing range at 2 ms response time. Reduced at shorter response times (see LL3 / WLL190T-2 tables).

<sup>5)</sup> LL3-DB01.

<sup>6)</sup> LL3-TB01.

<sup>7)</sup> See LL3 fiber-optic data.

<sup>8)</sup> Average service life: 100,000 h at T<sub>J</sub> = +25 °C.

<b>Display</b>	LED status display / 2x 4-character digital dual displays, Set value (green indicator) and actual value (red indicator) are displayed simultaneously, display of parameters
----------------	---

1) Up to 15 expansion units can be connected.

2) Sensing range at response time 2 ms. Reduction at shorter response time (see LL3/ WLL190T-2 table).

3) LL3-TB02 and tip adapter LL3-TA01.

4) Object with 90% remission (based on standard white DIN 5033). Sensing range at 2 ms response time. Reduced at shorter response times (see LL3 / WLL190T-2 tables).

5) LL3-DB01.

6) LL3-TB01.

7) See LL3 fiber-optic data.

8) Average service life: 100,000 h at  $T_U = +25\text{ °C}$ .

## Mechanics/electronics

<b>Supply voltage <math>U_B</math></b>	10 V DC ... 24 V DC <sup>1)</sup>
<b>Ripple</b>	$\leq 10\%$ <sup>2)</sup>
<b>Current consumption</b>	50 mA
<b>Switching output</b>	PNP <sup>3) 4)</sup>
<b>Switching mode</b>	Light/dark switching <sup>3) 4)</sup>
<b>Switching mode selector</b>	Manually selectable
<b>Response time</b>	$\leq 2\text{ ms}$ , $\leq 60\text{ }\mu\text{s}$ , $\leq 250\text{ }\mu\text{s}$
<b>Switching frequency</b>	8,333 Hz, 2,000 Hz, 250 Hz
<b>Time functions</b>	Without time delay Off delay Switch-on delay One shot
<b>Delay time</b>	Programmable, 0 ms ... 9,999 ms
<b>Connection type</b>	Male connector M8, 4-pin
<b>Circuit protection</b>	A <sup>5)</sup> B <sup>6)</sup> C <sup>7)</sup> D <sup>8)</sup>
<b>Protection class</b>	III
<b>Weight</b>	25 g
<b>Special device</b>	✓
<b>Housing material</b>	Plastic, ABS/PC
<b>Enclosure rating</b>	IP54 <sup>9)</sup>
<b>Ambient operating temperature</b>	$-25\text{ °C}$ ... $+55\text{ °C}$ <sup>10)</sup>
<b>Ambient temperature, storage</b>	$-40\text{ °C}$ ... $+70\text{ °C}$

1)  $\pm 10\%$ .

2) May not fall below or exceed  $U_V$  tolerances.

3)  $Q_1$ ,  $Q_2$ .

4) Selectable  $Q_2$ , external teach or counter reset.

5) A =  $V_S$  connections reverse-polarity protected.

6) B = inputs and output reverse-polarity protected.

7) C = interference suppression.

8) D = outputs overcurrent and short-circuit protected.

9) With correctly attached fibre-optic cable LL3 and closed protection hood.

10) Operating temperature fluctuates according to number of devices connected: 4–8 devices:  $-25\text{ °C}$  ...  $+50\text{ °C}$  (output current 50 mA) / 9–16 devices:  $-25\text{ °C}$  ...  $+45\text{ °C}$  (output current 20 mA).

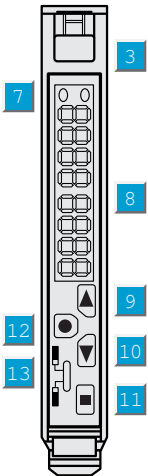
Certificates

EU declaration of conformity	✓
UK declaration of conformity	✓
ACMA declaration of conformity	✓
Moroccan declaration of conformity	✓
China RoHS	✓
Photobiological safety (DIN EN 62471) certificate	✓

Classifications

ECLASS 5.0	27270905
ECLASS 5.1.4	27270905
ECLASS 6.0	27270905
ECLASS 6.2	27270905
ECLASS 7.0	27270905
ECLASS 8.0	27270905
ECLASS 8.1	27270905
ECLASS 9.0	27270905
ECLASS 10.0	27270905
ECLASS 11.0	27270905
ECLASS 12.0	27270905
ETIM 5.0	EC002651
ETIM 6.0	EC002651
ETIM 7.0	EC002651
ETIM 8.0	EC002651
UNSPSC 16.0901	39121528

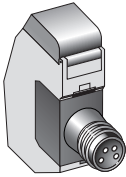
Adjustments



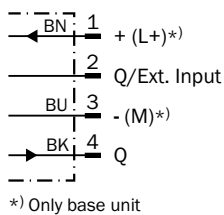
- ③ Locking the fiber-optic cables
- ⑦ LED indicator yellow;

- ⑦ lights continuously: output aktiv
- ⑦ no light: output inactive
- ⑦ blinks slowly: shot circuit detected
- ⑧ Numeric display 3-digit and 4-digit
- ⑨ step pushbutton > (manual switching threshold: higher/next function parameter)
- ⑩ step pushbutton < (manual switching threshold: lower/previous function parameter)
- ⑪ Teach-in button
- ⑫ Mode/Enter-button

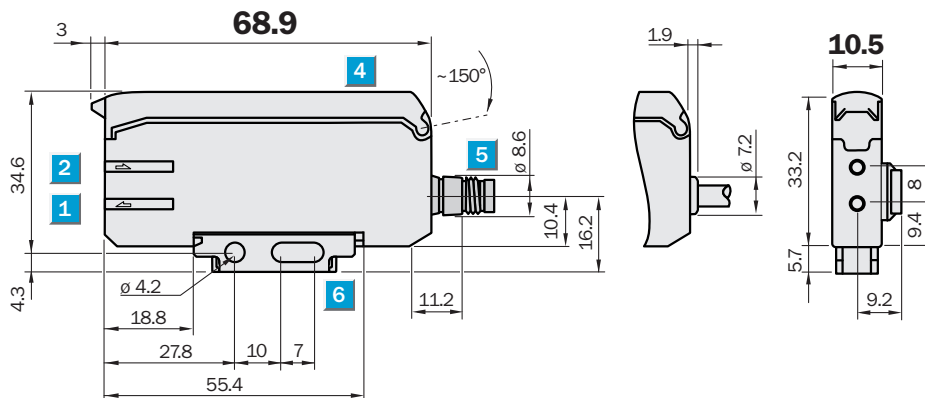
## Connection type



## Connection diagram Cd-139



## Dimensional drawing





Dimensions in mm (inch)

- ① Sender LED, installation of LL3 fibre-optic cable (sender fibre)
- ② Receiver, installation of LL3 fibre optic cable (receiver fibre)
- ③ Locking the fiber-optic cables
- ④ protective hood opens approx. 180°
- ⑤ Connector M8 or 1-wire cable or 3-wire cable replaceable (cables not included with delivery)
- ⑥ Mounting bracket, included with delivery

Recommended accessories

Other models and accessories → [www.sick.com/WLL190](http://www.sick.com/WLL190)

	Brief description	Type	part no.
Mounting systems			
	<ul style="list-style-type: none"><li>• <b>Description:</b> Mounting bracket</li><li>• <b>Material:</b> Steel</li><li>• <b>Details:</b> Steel, zinc coated</li><li>• <b>Items supplied:</b> Without mounting hardware</li><li>• <b>Suitable for:</b> WLL170-2, WLL190-2</li></ul>	BEF-WLL170	5306574
	<ul style="list-style-type: none"><li>• <b>Description:</b> Rail end piece for block mounting</li><li>• <b>Material:</b> Stainless steel</li><li>• <b>Details:</b> Stainless steel</li><li>• <b>Items supplied:</b> Mounting hardware included</li></ul>	BEF-EB01-W190	5313011

## SICK AT A GLANCE

SICK is one of the leading manufacturers of intelligent sensors and sensor solutions for industrial applications. A unique range of products and services creates the perfect basis for controlling processes securely and efficiently, protecting individuals from accidents and preventing damage to the environment.

We have extensive experience in a wide range of industries and understand their processes and requirements. With intelligent sensors, we can deliver exactly what our customers need. In application centers in Europe, Asia and North America, system solutions are tested and optimized in accordance with customer specifications. All this makes us a reliable supplier and development partner.

Comprehensive services complete our offering: SICK LifeTime Services provide support throughout the machine life cycle and ensure safety and productivity.

**For us, that is “Sensor Intelligence.”**

## WORLDWIDE PRESENCE:

Contacts and other locations –[www.sick.com](http://www.sick.com)