



# WI130T-P340

W130

PHOTOELECTRIC SENSORS

**SICK**  
Sensor Intelligence.



### Ordering information

Type	part no.
WI130T-P340	6032851

Other models and accessories → [www.sick.com/W130](http://www.sick.com/W130)

Illustration may differ



### Detailed technical data

#### Features

<b>Dimensions (W x H x D)</b>	10.5 mm x 33.8 mm x 81.4 mm
<b>Housing design (light emission)</b>	Rectangular
<b>Adjustment</b>	Single teach-in button Cable
<b>Special features</b>	Fiber-optic photoelectric sensor Operation in combination with sensor heads from the W 130L series

#### Mechanics/electronics

<b>Supply voltage</b>	12 V DC ... 24 V DC
<b>Current consumption</b>	50 mA
<b>Switching output</b>	PNP
<b>Switching mode</b>	Light/dark switching
<b>Switching mode selector</b>	Programmable
<b>Output current I<sub>max.</sub></b>	≤ 100 mA
<b>Response time</b>	60 μs 500 μs 5 ms
<b>Delay time</b>	ON and OFF delay, 0 ... 9 s
<b>Connection type</b>	Male connector M8, 4-pin
<b>Circuit protection</b>	A <sup>1)</sup> D <sup>2)</sup>
<b>Protection class</b>	III

<sup>1)</sup> A = V<sub>S</sub> connections reverse-polarity protected.

<sup>2)</sup> D = outputs overcurrent and short-circuit protected.

<sup>3)</sup> More than 2 devices mounted as a block max. 50 °C.

<b>Weight</b>	20 g
<b>Housing material</b>	Plastic, PPE/PC
<b>Enclosure rating</b>	IP50
<b>Items supplied</b>	Mounting bracket
<b>Ambient operating temperature</b>	-25 °C ... +55 °C <sup>3)</sup>
<b>Ambient temperature, storage</b>	-40 °C ... +70 °C

<sup>1)</sup> A = V<sub>S</sub> connections reverse-polarity protected.

<sup>2)</sup> D = outputs overcurrent and short-circuit protected.

<sup>3)</sup> More than 2 devices mounted as a block max. 50 °C.

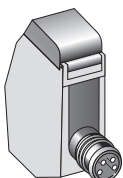
## Certificates

<b>EU declaration of conformity</b>	✓
<b>UK declaration of conformity</b>	✓
<b>ACMA declaration of conformity</b>	✓
<b>Moroccan declaration of conformity</b>	✓
<b>China RoHS</b>	✓
<b>cRUus certificate</b>	✓

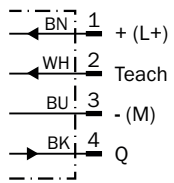
## Classifications

<b>ECLASS 5.0</b>	27270905
<b>ECLASS 5.1.4</b>	27270905
<b>ECLASS 6.0</b>	27270905
<b>ECLASS 6.2</b>	27270905
<b>ECLASS 7.0</b>	27270905
<b>ECLASS 8.0</b>	27270905
<b>ECLASS 8.1</b>	27270905
<b>ECLASS 9.0</b>	27270905
<b>ECLASS 10.0</b>	27270905
<b>ECLASS 11.0</b>	27270905
<b>ECLASS 12.0</b>	27270905
<b>ETIM 5.0</b>	EC002651
<b>ETIM 6.0</b>	EC002651
<b>ETIM 7.0</b>	EC002651
<b>ETIM 8.0</b>	EC002651
<b>UNSPSC 16.0901</b>	39121528

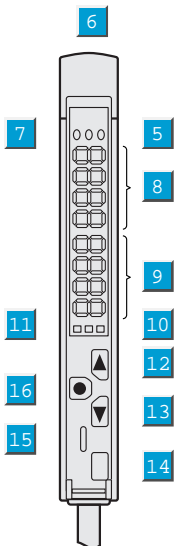
## Connection type



### Connection diagram Cd-092

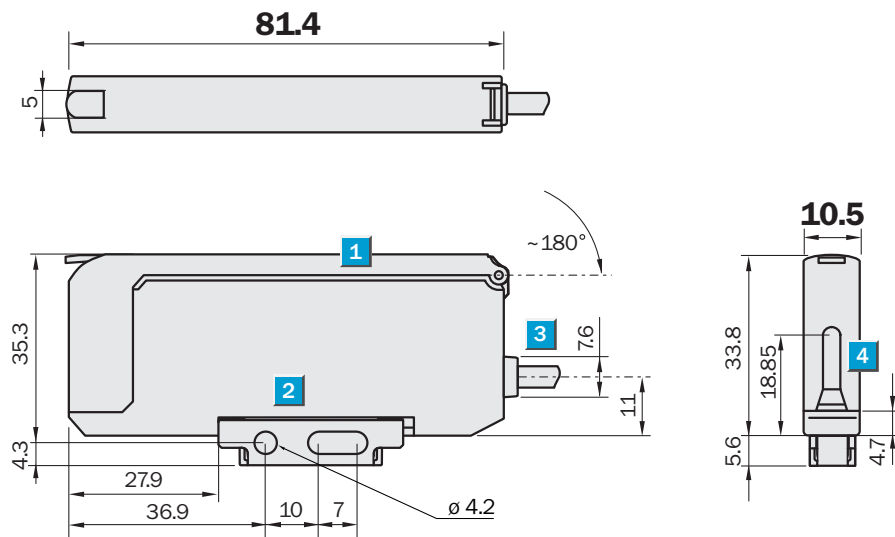


### Adjustments



- ⑤ LED indicator: output 1
- ⑥ LED indicator: laser active
- ⑦ LED indicator: output 2
- ⑧ Display: measurement value
- ⑨ Display: switching point
- ⑩ Indicator: SET active
- ⑪ LED indicator: output 1 or 2 activated
- ⑫ Function key

## Dimensional drawing







Dimensions in mm (inch)

- ① protective hood opens approx. 180°
- ② Mounting bracket, included with delivery
- ③ Connection
- ④ Connection for sensor heads

## Recommended accessories

Other models and accessories → [www.sick.com/W130](http://www.sick.com/W130)

	Brief description	Type	part no.
<b>connectors and cables</b>			
	<ul style="list-style-type: none"> <li>• <b>Connection type head A:</b> Male connector, M8, 4-pin, straight, A-coded</li> <li>• <b>Description:</b> Unshielded</li> <li>• <b>Connection systems:</b> Screw-type terminals</li> <li>• <b>Permitted cross-section:</b> 0.14 mm² ... 0.5 mm²</li> </ul>	STE-0804-G	6037323
	<ul style="list-style-type: none"> <li>• <b>Connection type head A:</b> Female connector, M8, 4-pin, straight, A-coded</li> <li>• <b>Connection type head B:</b> Flying leads</li> <li>• <b>Signal type:</b> Sensor/actuator cable</li> <li>• <b>Cable:</b> 5 m, 4-wire, PVC</li> <li>• <b>Description:</b> Sensor/actuator cable, unshielded</li> <li>• <b>Application:</b> Zones with chemicals, Uncontaminated zones</li> </ul>	YF8U14-050VA3XLEAX	2095889
	<ul style="list-style-type: none"> <li>• <b>Connection type head A:</b> Female connector, M8, 4-pin, straight, A-coded</li> <li>• <b>Connection type head B:</b> Flying leads</li> <li>• <b>Signal type:</b> Sensor/actuator cable</li> <li>• <b>Cable:</b> 5 m, 4-wire, PUR, halogen-free</li> <li>• <b>Description:</b> Sensor/actuator cable, unshielded</li> <li>• <b>Application:</b> Uncontaminated zones, Zones with oils and lubricants, Robot, Drag chain operation</li> </ul>	YF8U14-050UA3XLEAX	2094792
<b>Mounting systems</b>			
	<ul style="list-style-type: none"> <li>• <b>Description:</b> Plate N11N for universal clamp bracket</li> <li>• <b>Material:</b> Stainless steel</li> <li>• <b>Details:</b> Stainless steel 1.4571 (sheet), Stainless steel 1.4408 (clamp)</li> <li>• <b>Items supplied:</b> Universal clamp (5322627), mounting hardware</li> <li>• <b>Usable for:</b> DeltaPac, Glare, WTD20E</li> </ul>	BEF-KHS-N11N	2071081

## SICK AT A GLANCE

SICK is one of the leading manufacturers of intelligent sensors and sensor solutions for industrial applications. A unique range of products and services creates the perfect basis for controlling processes securely and efficiently, protecting individuals from accidents and preventing damage to the environment.

We have extensive experience in a wide range of industries and understand their processes and requirements. With intelligent sensors, we can deliver exactly what our customers need. In application centers in Europe, Asia and North America, system solutions are tested and optimized in accordance with customer specifications. All this makes us a reliable supplier and development partner.

Comprehensive services complete our offering: SICK LifeTime Services provide support throughout the machine life cycle and ensure safety and productivity.

For us, that is “Sensor Intelligence.”

## WORLDWIDE PRESENCE:

Contacts and other locations –[www.sick.com](http://www.sick.com)