



WLG190T-N410

W190 Laser High Grade Glass

PHOTOELECTRIC SENSORS

SICK
Sensor Intelligence.



Illustration may differ

Ordering information

Type	part no.
WLG190T-N410	6026536

Included in delivery: P250F (1)

Other models and accessories → www.sick.com/W190_Laser_High_Grade_Glass

Detailed technical data

Features

Functional principle	Photoelectric retro-reflective sensor
Functional principle detail	Autocollimation
Dimensions (W x H x D)	15 mm x 44.4 mm x 30 mm
Housing design (light emission)	Rectangular
Sensing range max.	0.01 m ... 1.8 m ¹⁾ 0.01 m ... 1.2 m ²⁾
Sensing range	²⁾
Type of light	Visible red light
Light source	Laser
Light spot size (distance)	Ø 15 mm (1 m)
Laser class	2
Adjustment	Menu-controlled Single teach-in button Teach-in
Display	Sender power, reflectivity, switching threshold, distance, mode
Special feature	Detecting transparent objects

¹⁾ Reflector PL80A.

²⁾ Reflector P250.

Mechanics/electronics

Supply voltage	10 V DC ... 30 V DC ¹⁾
-----------------------	-----------------------------------

¹⁾ Limit values.

²⁾ May not exceed or fall below U_V tolerances.

³⁾ Without load.

⁴⁾ Signal transit time with resistive load.

⁵⁾ Programmable.

⁶⁾ With light/dark ratio 1:1.

⁷⁾ A = V_S connections reverse-polarity protected.

⁸⁾ D = outputs overcurrent and short-circuit protected.

⁹⁾ Reference voltage: 50 V DC.

Ripple	$\pm 10 \% ^{2)}$
Current consumption	40 mA ³⁾
Switching output	NPN
Switching mode	Light/dark switching
Switching mode selector	Programmable
Output current I_{max.}	$\leq 100 \text{ mA}$
Response time	0.7 ms ⁴⁾ 2 ms ⁵⁾ 5 ms
Switching frequency	700 Hz ⁶⁾ 200 Hz ⁵⁾ 100 Hz
Time functions	Programmable Programmable: 0 ... 10 s
Delay time	Nor: normal mode Ond: On delay mode, reactivation delay OFd: Off-delay mode, release delay OnE: One Shot Mode, ONE SHOT
Connection type	Male connector M8, 4-pin
Circuit protection	A ⁷⁾ D ⁸⁾
Protection class	III ⁹⁾
Weight	120 g
Polarisation filter	✓
Housing material	Plastic, ABS
Optics material	Plastic, PMMA
Tightening torque, max.	0.5 Nm
Enclosure rating	IP67
Items supplied	Reflector P250F
Special feature	Detecting transparent objects
Ambient operating temperature	-10 °C ... +40 °C
Ambient temperature, storage	-20 °C ... +60 °C

¹⁾ Limit values.

²⁾ May not exceed or fall below U_v tolerances.

³⁾ Without load.

⁴⁾ Signal transit time with resistive load.

⁵⁾ Programmable.

⁶⁾ With light/dark ratio 1:1.

⁷⁾ A = V_S connections reverse-polarity protected.

⁸⁾ D = outputs overcurrent and short-circuit protected.

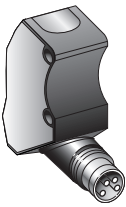
⁹⁾ Reference voltage: 50 V DC.

Classifications

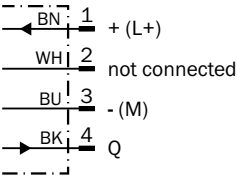
ECLASS 5.0	27270902
ECLASS 5.1.4	27270902
ECLASS 6.0	27270902

ECLASS 6.2	27270902
ECLASS 7.0	27270902
ECLASS 8.0	27270902
ECLASS 8.1	27270902
ECLASS 9.0	27270902
ECLASS 10.0	27270902
ECLASS 11.0	27270902
ECLASS 12.0	27270902
ETIM 5.0	EC002717
ETIM 6.0	EC002717
ETIM 7.0	EC002717
ETIM 8.0	EC002717
UNSPSC 16.0901	39121528

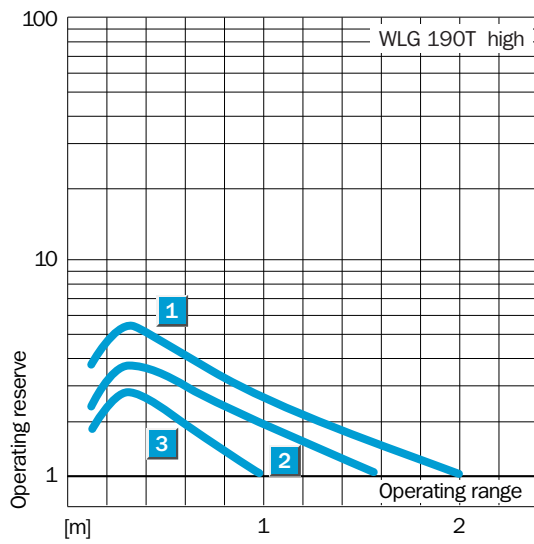
Connection type



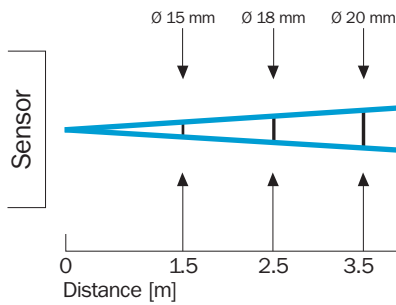
Connection diagram Cd-066



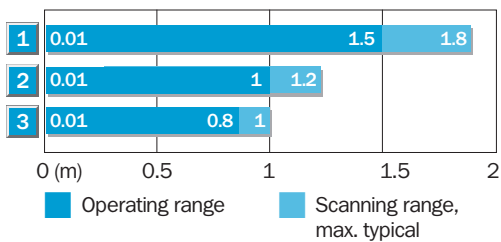
Characteristic curve WLG190T, 1.8 m



Light spot size WLG190T

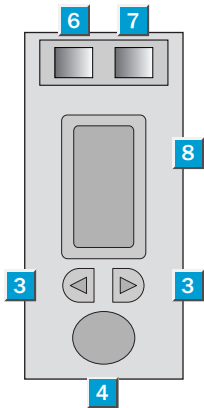


Sensing range diagram WLG190T, 1.8 m



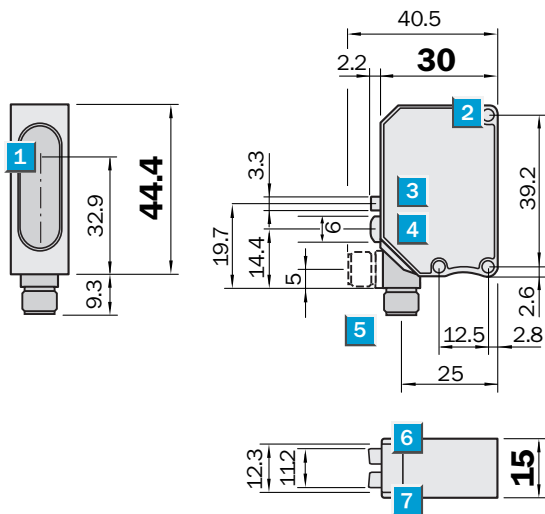
Reflector type	Operating range
1 PL 80 A	0.01 ... 1.5 m
2 P 250/PL 40 A/PL 50 A	0.01 ... 1 m
3 PL 30 A/PL 31 A	0.01 ... 0.8 m

Adjustments



- ③ +/- button; select mode button
- ④ Teach-in button
- ⑥ Status indicator LED, green: Laser on
- ⑦ Status indicator LED, yellow: Output active
- ⑧ Numerical Display

Dimensional drawing



Dimensions in mm (inch)

- ① Center of optical axis
- ② Mounting hole, \varnothing approx. 3.1 mm
- ③ +/- button; select mode button
- ④ Teach-in button
- ⑤ Connector M8, 4-pin, 90° rotatable or cable 2 m, 4-wire
- ⑥ Status indicator LED, green: Laser on
- ⑦ Status indicator LED, yellow: Output active

Recommended accessories

Other models and accessories → www.sick.com/W190_Laser_High_Grade_Glass

	Brief description	Type	part no.
reflectors and optics			
	<ul style="list-style-type: none"> Description: Rectangular, screw connection Dimensions: 51 mm 61 mm Ambient operating temperature: -30 °C ... +65 °C 	P250	5304812
	<ul style="list-style-type: none"> Description: Fine triple reflector, screw connection, suitable for laser sensors Dimensions: 52 mm 62 mm Ambient operating temperature: -30 °C ... +65 °C 	P250F	5308843
Mounting systems			
	<ul style="list-style-type: none"> Description: Universal mounting bracket for reflectors Dimensions (W x H x L): 85 mm x 90 mm x 35 mm Material: Steel Details: Steel, zinc coated Suitable for: C110A, P250, PL20, PL30A, PL40A, PL80A 	BEF-WN-REFX	2064574
	<ul style="list-style-type: none"> Description: Mounting bracket Material: Steel Details: Steel, zinc coated Items supplied: Mounting hardware included 	BEF-W190	5311362
	<ul style="list-style-type: none"> Description: Plate N11N for universal clamp bracket Material: Stainless steel Details: Stainless steel 1.4571 (sheet), Stainless steel 1.4408 (clamp) Items supplied: Universal clamp (5322627), mounting hardware Usable for: DeltaPac, Glare, WTD20E 	BEF-KHS-N11N	2071081
connectors and cables			
	<ul style="list-style-type: none"> Connection type head A: Female connector, M8, 4-pin, straight, A-coded Connection type head B: Flying leads Signal type: Sensor/actuator cable Cable: 5 m, 4-wire, PUR, halogen-free Description: Sensor/actuator cable, unshielded Application: Uncontaminated zones, Zones with oils and lubricants, Robot, Drag chain operation 	YF8U14-050UA3XLEAX	2094792
	<ul style="list-style-type: none"> Connection type head A: Female connector, M8, 4-pin, straight, A-coded Connection type head B: Flying leads Signal type: Sensor/actuator cable Cable: 5 m, 4-wire, PVC Description: Sensor/actuator cable, unshielded Application: Zones with chemicals, Uncontaminated zones 	YF8U14-050VA3XLEAX	2095889
	<ul style="list-style-type: none"> Connection type head A: Male connector, M8, 4-pin, straight, A-coded Description: Unshielded Connection systems: Screw-type terminals Permitted cross-section: 0.14 mm² ... 0.5 mm² 	STE-0804-G	6037323

SICK AT A GLANCE

SICK is one of the leading manufacturers of intelligent sensors and sensor solutions for industrial applications. A unique range of products and services creates the perfect basis for controlling processes securely and efficiently, protecting individuals from accidents and preventing damage to the environment.

We have extensive experience in a wide range of industries and understand their processes and requirements. With intelligent sensors, we can deliver exactly what our customers need. In application centers in Europe, Asia and North America, system solutions are tested and optimized in accordance with customer specifications. All this makes us a reliable supplier and development partner.

Comprehensive services complete our offering: SICK LifeTime Services provide support throughout the machine life cycle and ensure safety and productivity.

For us, that is “Sensor Intelligence.”

WORLDWIDE PRESENCE:

Contacts and other locations –www.sick.com