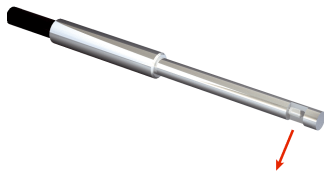


# LL3-TV01

Fiber-optic cables

**FIBER-OPTIC SENSORS**

**SICK**  
Sensor Intelligence.



### Ordering information

Type	part no.
LL3-TV01	5308058

**Included in delivery:** FC (1)

Other models and accessories → [www.sick.com/Fiber-optic\\_cables](http://www.sick.com/Fiber-optic_cables)

### Detailed technical data

#### Features

<b>Device type</b>	Fiber-optic cables
<b>Functional principle</b>	Through-beam system, consisting of a sender and a receiver
<b>Fiber-optic head design</b>	Smooth sleeve, Long end sleeve, 90° deflection
<b>Application</b>	Standard
<b>Compatible fiber-optic amplifiers</b>	GLL70, WLL80, WLL180, GLL170(T), WLL24 Ex
<b>Sensing range max.</b>	3,590 mm (Sensing range of WLL80 at 8 ms)
<b>Minimal object diameter</b>	0.2 mm <sup>1)</sup>
<b>Optical fiber head</b>	
Angle of dispersion	60°
Integrated lens	No
Compatibility tip adapters	No
<b>Optical fiber</b>	
Compatibility with infrared light	No
Optical fiber cable can be shortened	✓
Adapter end sleeves required	No
<b>Included with delivery</b>	FC fiber cutter (5304141)

<sup>1)</sup> Minimum detectable object was determined at optimum measuring distance and optimum setting.

#### Mechanics

<b>Optical fiber head</b>	
Light emission	Radial
Smooth sleeve diameter	3 mm
Optical fiber taper diameter	≥ 2 mm
Optical fiber taper length after 2 mm	≥ 20 mm
<b>Optical fiber</b>	
Fiber length	2,000 mm
Bending radius	25 mm
Dynamic flexibility (robotics)	No
Outside diameter, optical fiber cable connection	2.2 mm
Fiber arrangement	Singlefiber
Core structure	Ø 1,0 mm Singlefiber
<b>Material</b>	

Optical fiber head	Stainless steel
Sheath	Polyethylen (PE)
Fibers	Polymethylmethacrylat (PMMA)
<b>Weight</b>	30 g

## Ambient data

<b>Ambient operating temperature</b>	-40 °C ... +70 °C
--------------------------------------	-------------------

## Sensing ranges with GLL70

<b>Operating mode 50 µs</b>	370 mm
<b>Operating mode 250 µs</b>	1,100 mm
<b>Operating mode 1 ms</b>	1,615 mm
<b>Operating mode 4 ms</b>	3,020 mm

## Sensing ranges with WLL80

<b>Operating mode 16 µs</b>	255 mm
<b>Operating mode 70 µs</b>	795 mm
<b>Operating mode 250 µs</b>	1,295 mm
<b>Operating mode 500 µs</b>	1,670 mm
<b>Operating mode 1 ms</b>	1,895 mm
<b>Operating mode 2 ms</b>	2,480 mm
<b>Operating mode 8 ms</b>	3,590 mm
<b>Note</b>	Sensing ranges related to fiber-optic sensors with type of light: visible red light

## Sensing ranges with WLL180T

<b>Operating mode 16 µs</b>	120 mm
<b>Operating mode 70 µs</b>	400 mm
<b>Operating mode 250 µs</b>	800 mm
<b>Operating mode 2 ms</b>	1,800 mm
<b>Operating mode 8 ms</b>	2,750 mm
<b>Note</b>	Sensing ranges related to fiber-optic sensors with type of light: visible red light

## Sensing ranges with GLL170

<b>Operating mode 250 µs</b>	270 mm
------------------------------	--------

## Sensing ranges with GLL170T

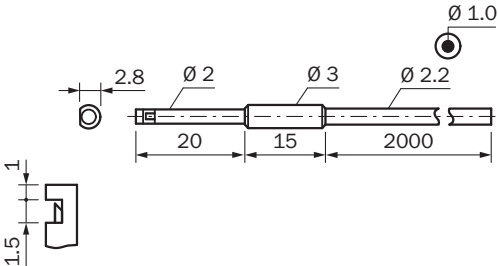
<b>Operating mode 50 µs</b>	250 mm
<b>Operating mode 250 µs</b>	440 mm

## Classifications

<b>ECLASS 5.0</b>	27270905
<b>ECLASS 5.1.4</b>	27270905
<b>ECLASS 6.0</b>	27270905
<b>ECLASS 6.2</b>	27270905
<b>ECLASS 7.0</b>	27270905
<b>ECLASS 8.0</b>	27270905

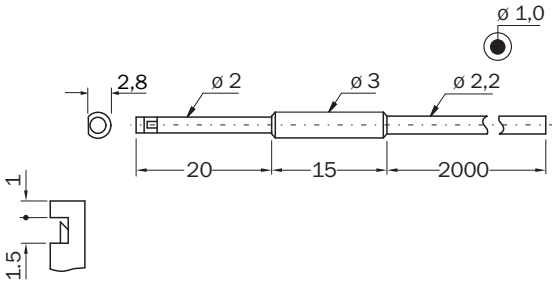
ECLASS 8.1	27270905
ECLASS 9.0	27270905
ECLASS 10.0	27270905
ECLASS 11.0	27270905
ECLASS 12.0	27270905
ETIM 5.0	EC002651
ETIM 6.0	EC002651
ETIM 7.0	EC002651
ETIM 8.0	EC002651
UNSPSC 16.0901	39121528

Dimensional drawing LL3-TV01



Dimensions in mm (inch)

Dimensional drawing



Dimensions in mm (inch)

## SICK AT A GLANCE

SICK is one of the leading manufacturers of intelligent sensors and sensor solutions for industrial applications. A unique range of products and services creates the perfect basis for controlling processes securely and efficiently, protecting individuals from accidents and preventing damage to the environment.

We have extensive experience in a wide range of industries and understand their processes and requirements. With intelligent sensors, we can deliver exactly what our customers need. In application centers in Europe, Asia and North America, system solutions are tested and optimized in accordance with customer specifications. All this makes us a reliable supplier and development partner.

Comprehensive services complete our offering: SICK LifeTime Services provide support throughout the machine life cycle and ensure safety and productivity.

**For us, that is “Sensor Intelligence.”**

## WORLDWIDE PRESENCE:

Contacts and other locations –[www.sick.com](http://www.sick.com)