

# PC4-C128100000000

Device columns

**MOUNTING SYSTEMS**

**SICK**  
Sensor Intelligence.



### Ordering information

Type	part no.
PC4-C128100000000	2139637

Other models and accessories → [www.sick.com/Device\\_columns](http://www.sick.com/Device_columns)

### Detailed technical data

#### Features

<b>Description</b>	PC4 compact column for mounting suitable variants of the deTec and deTem product families. Enables devices to be mounted on all four sides of the device column.
<b>Mounting system type</b>	Mechanical anchoring to the floor
<b>Items supplied</b>	PC4 device column with pre-assembled alignment plate and removable end cap Base plate with spirit level, fine alignment wheel and setscrews M8 screws and washers for mounting the alignment plate on the base plate Operating instructions for download
<b>Column height</b>	1,284.5 mm
<b>Suitable for device variants</b>	
deTec safety light curtain	Protective field height ≤ 1,050 mm
deTem safety light-beam sensor	4 beams, distance of lowest beam from floor: 300 mm
<b>Compatible brackets</b>	
FlexFix	✓
QuickFix	✓
Flat-Mount	✓ <sup>1)</sup>
Swivel-Mount	✓ <sup>1)</sup>
<b>Additional options</b>	Enables additional accessories, such as muting arms, to be installed.
Muting sensor protection left (2140187)	✓
Muting sensor protection right (2140186)	✓
Muting arm adapter (2140086)	✓
<b>Height of first beam above ground</b>	300 mm

<sup>1)</sup> The flat mount and swivel mount brackets are attached at the top and bottom of the device. A correspondingly higher column must therefore be selected for installation.

#### Functions

<b>Alignment</b>	The complete alignment process involves leveling the base plate and rotating the alignment plate at the foot of the column.
Alignment aid mark (–45°, 0°, 45°)	✓
Fine alignment wheel	✓
<b>Setscrews for leveling</b>	✓

<b>Spirit level</b>	✓
---------------------	---

## Mechanics

<b>Material</b>		
	Column profile	Aluminum (anodised)
	Alignment plate	Aluminum (powder-coating)
	Base plate	Aluminum (powder-coating)
	Fine alignment wheel	PA6
	End cap	ABS
<b>Dimensions</b>		See dimensional drawing
	L1	1,224 mm <sup>1)</sup>
	L2	1,284.5 mm <sup>2)</sup>
	Cross-section of column profile	68 mm x 68 mm
	Diameter of base plate	195 mm
<b>Weight</b>		4.6 kg

<sup>1)</sup> L1 = Column profile height.

<sup>2)</sup> L2 = Column height (incl. base plate, alignment plate and end cap).

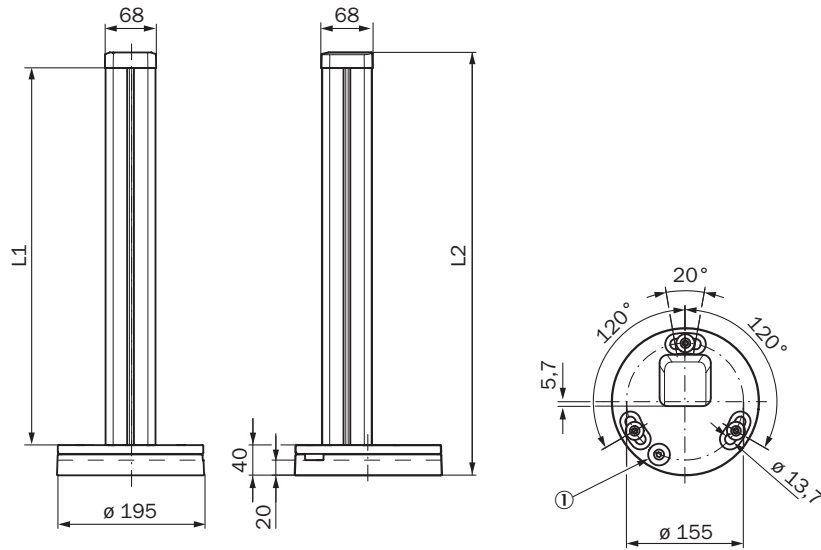
## Ambient data

<b>Storage temperature</b>	-30 °C ... +70 °C
----------------------------	-------------------

## Classifications

<b>ECLASS 5.0</b>	27279202
<b>ECLASS 5.1.4</b>	27279202
<b>ECLASS 6.0</b>	27279202
<b>ECLASS 6.2</b>	27279202
<b>ECLASS 7.0</b>	27279202
<b>ECLASS 8.0</b>	27279202
<b>ECLASS 8.1</b>	27279202
<b>ECLASS 9.0</b>	27273701
<b>ECLASS 10.0</b>	27273701
<b>ECLASS 11.0</b>	27273701
<b>ECLASS 12.0</b>	27273701
<b>ETIM 5.0</b>	EC001941
<b>ETIM 6.0</b>	EC001941
<b>ETIM 7.0</b>	EC001941
<b>ETIM 8.0</b>	EC001941
<b>UNSPSC 16.0901</b>	39111609

### Dimensional drawing PC4 Compact Column



Dimensions in mm (inch)

① Fine alignment wheel

Type	Part no.	L1 = Column profile height	L2 = Column height (incl. base plate, alignment plate and end cap)
PC4-C098110000000	2139633	924	984,5
PC4-C108110000000	2139635	1024	1084,5
PC4-C118110000000	2139636	1124	1184,5
PC4-C128110000000	2139637	1224	1284,5
PC4-C141110000000	2139638	1350	1410,5
PC4-C156110000000	2139639	1500	1560,5
PC4-C171110000000	2139640	1650	1710,5
PC4-C186110000000	2139641	1800	1860,5
PC4-C201110000000	2139642	1950	2010,5
PC4-C216110000000	2139643	2100	2160,5
PC4-C231110000000	2139644	2250	2310,5

## SICK AT A GLANCE

SICK is one of the leading manufacturers of intelligent sensors and sensor solutions for industrial applications. A unique range of products and services creates the perfect basis for controlling processes securely and efficiently, protecting individuals from accidents and preventing damage to the environment.

We have extensive experience in a wide range of industries and understand their processes and requirements. With intelligent sensors, we can deliver exactly what our customers need. In application centers in Europe, Asia and North America, system solutions are tested and optimized in accordance with customer specifications. All this makes us a reliable supplier and development partner.

Comprehensive services complete our offering: SICK LifeTime Services provide support throughout the machine life cycle and ensure safety and productivity.

**For us, that is “Sensor Intelligence.”**

## WORLDWIDE PRESENCE:

Contacts and other locations –[www.sick.com](http://www.sick.com)