

SICK.COM



DATA SHEET

# BEF-KHZPF100MPA

Brackets  
Mounting systems

**SICK** Sensor Intelligence

## MOUNTING SYSTEMS

## BEF-KHZPF100MPA

## ORDERING INFORMATION

Type	part no.
BEF-KHZPF100MPA	<a href="#">2086749</a>

Further device versions and accessories at [www.sick.com/Brackets](http://www.sick.com/Brackets)

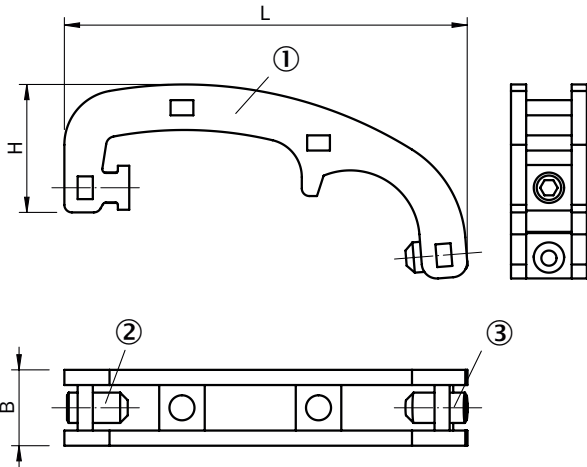


## DETAILED TECHNICAL DATA

## FEATURES

Accessory group	Mounting systems
Accessory family	Brackets
Description	Sensor adapter DSBC-100
Material	Stainless steel V2A
Dimensions (W x H x L)	10 mm x 17 mm x 59.8 mm
Usable for	MPA-107 mm ... 251 mm (sensor measuring range), 2 (recommended number of brackets) MPA-287 mm ... 431 mm (measuring range sensor), 3 (recommended number mounting brackets) MPA-467 mm ... 647 mm (measuring range sensor), 4 (recommended number mounting brackets) MPA-683 mm ... 791 mm (measuring range sensor), 5 (recommended number mounting brackets) MPA-827 mm ... 1007 mm (measuring range sensor), 6 (recommended number mounting brackets)
Mounting system type	Adaptor

**DIMENSIONAL DRAWING**



Dimensions in mm (inch)

- ① Sensor adapter
- ② Fixing screw SW 2.0 for sensor
- ③ Fixing screw SW 2.0 for cylinder

		<b>A</b>	<b>B</b>	<b>C</b>
2086744	BEF-KHZPF032MPA	43.4	16.9	10
2086745	BEF-KHZPF040MPA	48.9	16.9	10
2086746	BEF-KHZPF050MPA	51.7	16.9	10
2086747	BEF-KHZPF063MPA	53.1	16.9	10
2086748	BEF-KHZPF080MPA	58.4	16.9	10
2086749	BEF-KHZPF100MPA	59.8	17.0	10
2086750	BEF-KHZPF125MPA	63.7	22.5	10

Further information as well as suitable accessories, example applications and downloads such as CAD dimensional models, operating instructions and software can be found at [www.sick.com/2086749](http://www.sick.com/2086749)



SICK AG  
WALDKIRCH  
GERMANY  
SICK.COM

# SICK AT A GLANCE

SICK is a leading global technology company for intelligent sensors and integrated solutions in industrial automation. Our technologies set benchmarks, making your industrial processes more efficient, safer and more sustainable – both in logistics and manufacturing operations.

SICK combines sensor intelligence with industry expertise and certified consulting services. We provide the ideal foundation for scalable as well as tailor-made automation solutions and create added value along the entire value chain. Our close partnerships with our customers are more than just a promise: Together, we optimize productivity, improve quality, protect health and safety, and help build a sustainable future. All with empathy and trust.

Since 1946, we have been developing innovative technologies with passion and a pioneering spirit. With a global network in around 40 countries, SICK has a global presence and is always close by. The company's headquarters are located in Waldkirch near Freiburg, Germany. Our customers benefit from our understanding of both local and global requirements, which enables us to deliver tailor-made solutions

**SICK**  
Sensor Intelligence