



BEF-FA-LB1210

Assembly accessories

MOUNTING SYSTEMS

SICK
Sensor Intelligence.



Ordering information

Type	part no.
BEF-FA-LB1210	2044591

Other models and accessories → www.sick.com/Assembly_accessories

Detailed technical data

Features

Accessory group	Mounting systems
Accessory family	Assembly accessories
Description	Bearing block for servo and face mount flange encoder. The heavy-duty bearing block is used to absorb very large radial and axial shaft loads. Particularly when using belt pulleys, chain sprockets, friction wheels. Operating speed max. 4,000 rpm ⁻¹ , axial shaft load 150 N, radial shaft load 250 N, bearing service life 3.6 x 10 ⁹ revolutions

Certificates

China RoHS	✓
-------------------	---

Classifications

ECLASS 5.0	27279202
ECLASS 5.1.4	27279202
ECLASS 6.0	27279202
ECLASS 6.2	27279202
ECLASS 7.0	27279202
ECLASS 8.0	27279202
ECLASS 8.1	27279202
ECLASS 9.0	27273701
ECLASS 10.0	27273701
ECLASS 11.0	27273701
ECLASS 12.0	27273701
ETIM 5.0	EC002024
ETIM 6.0	EC002024
ETIM 7.0	EC002024
ETIM 8.0	EC002024
UNSPSC 16.0901	32131023

Technical drawing of a mechanical part, showing four views: front, top, side, and bottom. The drawing includes dimensions in millimeters (mm) and inches (in), as well as surface texture and material specifications.

Front View (Top Left):

- Overall width: 50 (1.97)
- Overall height: 68±0.2 (2.68)
- Bottom flange thickness: 10 (0.39)

Top View (Bottom Left):

- Overall width: 50 (1.97)
- Overall height: 90±0.2 (3.54)
- Internal width: 80-0.2 (3.15)
- Internal height: 64±0.4 (2.52)
- Bottom flange thickness: 10 (0.39)

Side View (Top Right):

- Overall width: 125 (4.92)
- Overall height: 56 (2.20)
- Top flange thickness: 15.5 (0.49)
- Internal width: 20.3 (0.80)
- Internal height: 24 (0.94)
- Bottom flange thickness: 12 (0.47)
- Internal width: 36.5 (1.44)
- Internal height: 73 (2.87)
- Overall width: 98 (3.86)

Bottom View (Bottom Right):

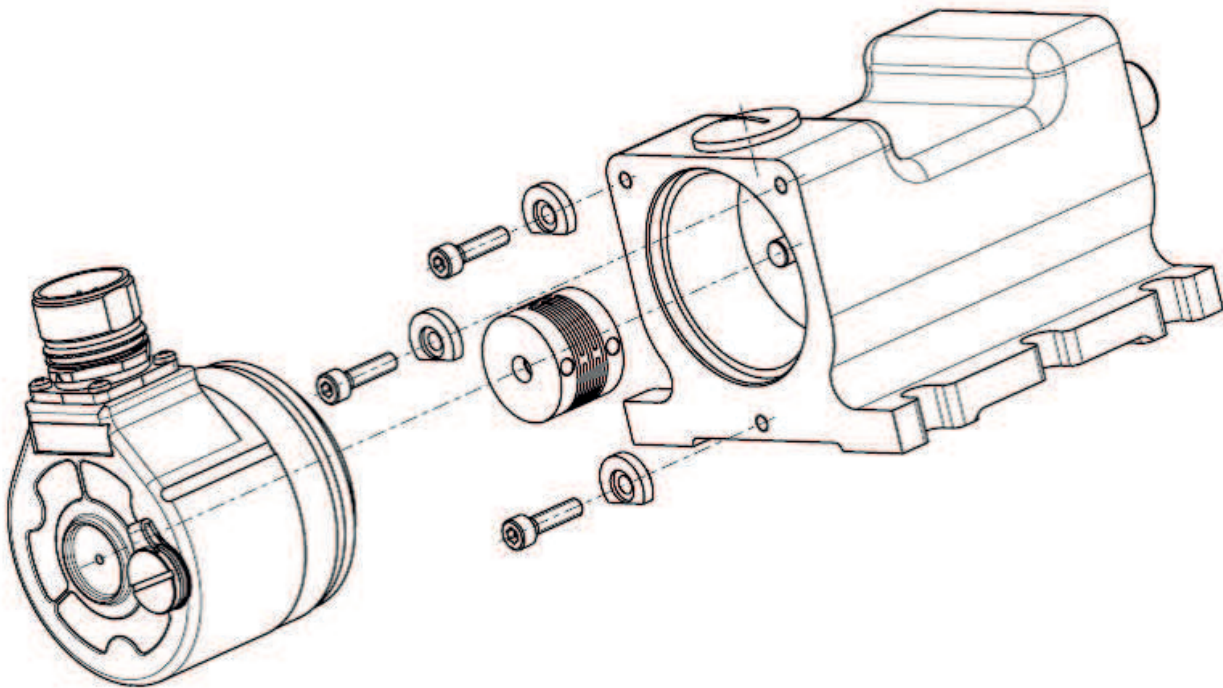
- Overall width: 52 (2.05)
- Overall height: 40 (1.57)
- Internal width: 50 H7 (1.97)
- Internal height: 28 (1.10)
- Bottom flange thickness: 6 (0.24)

Surface Texture and Material Specifications:

- Surface texture: 0.2 A
- Material: 6 x 8.4 H13 (0.33)
- Internal thread: Ø 6 f6 (0.24)
- Internal thread: Ø 15 g7 (0.59)


2025-11-19 09:02:17 | Data sheet
Subject to change without notice

Instruction for installation



Recommended accessories

Other models and accessories → www.sick.com/Assembly_accessories

	Brief description	Type	part no.
Mounting systems			
	<ul style="list-style-type: none">• Description: Mounting kit for servo flange encoder on the bearing block, 1 bar coupling SKPS 1520 06/06 1 hexagon socket wrench SW1.5 DIN 911, 3 mounting eccentric BEMN 1242 49 3 screws M4 x 10 DIN 912, 1 hexagon socket wrench SW3 DIN 911• Items supplied: 1 bar coupling SKPS 1520 06/06 1 hexagon socket wrench SW1.5 DIN 911, 3 mounting eccentric BEMN 1242 49 3 screws M4 x 10 DIN 912, 1 hexagon socket wrench SW3 DIN 911	BEF-MK-LB	5320872
	<ul style="list-style-type: none">• Description: Flange adapter (adapts size 60 face mount flange encoder to bearing block with part. no. 2044591)	BEF-FA-036-050-019	2063378

SICK AT A GLANCE

SICK is one of the leading manufacturers of intelligent sensors and sensor solutions for industrial applications. A unique range of products and services creates the perfect basis for controlling processes securely and efficiently, protecting individuals from accidents and preventing damage to the environment.

We have extensive experience in a wide range of industries and understand their processes and requirements. With intelligent sensors, we can deliver exactly what our customers need. In application centers in Europe, Asia and North America, system solutions are tested and optimized in accordance with customer specifications. All this makes us a reliable supplier and development partner.

Comprehensive services complete our offering: SICK LifeTime Services provide support throughout the machine life cycle and ensure safety and productivity.

For us, that is “Sensor Intelligence.”

WORLDWIDE PRESENCE:

Contacts and other locations –www.sick.com