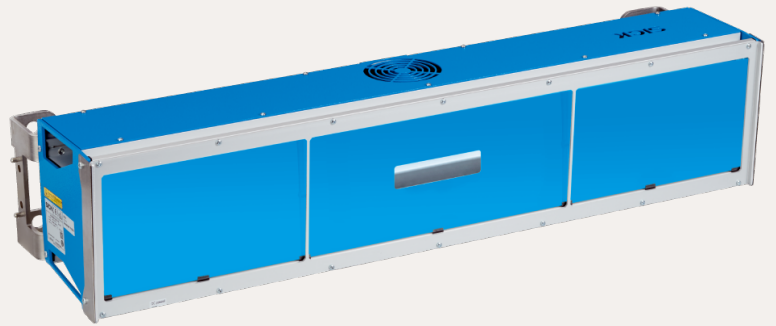


SICK.COM



DATA SHEET

ICI890-44110

Illuminations
Reflectors and optics

SICK Sensor Intelligence

REFLECTORS AND OPTICS

ICI890-44110

ORDERING INFORMATION

Type	part no.
ICI890-44110	1108618

Further device versions and accessories at www.sick.com/Illuminations



DETAILED TECHNICAL DATA

FEATURES

Product segment	Reflectors and optics
Product	Illuminations
Product version	LED
Application	Indoor area
Description	Illumination for ICD89x, length 900 mm
Light source	Visible blue light, 449 nm
LED class	Risk group 2
Power consumption	200 W
Supply voltage	24 V DC, $\pm 20\%$ ¹⁾
Connections	M12
Ambient operating temperature	0 °C ... +50 °C
Storage temperature	-20 °C ... +70 °C
Relative humidity	95 %, Non-condensing
Ambient conditions	Degree of contamination 2 (EN 61010-1)
Altitude (above sea level)	< 2,000 m
Weight	17,5 kg

¹⁾ ES1 according to EN 62368-1 or SELV according to EN 60950-1 (each according to currently valid standard).

CERTIFICATES

EU declaration of conformity	✓
UK declaration of conformity	✓

ACMA declaration of conformity	✓
China RoHS	✓

Further information as well as suitable accessories, example applications and downloads such as CAD dimensional models, operating instructions and software can be found at www.sick.com/1108618



SICK AG
WALDKIRCH
GERMANY
SICK.COM

SICK AT A GLANCE

SICK is a leading global technology company for intelligent sensors and integrated solutions in industrial automation. Our technologies set benchmarks, making your industrial processes more efficient, safer and more sustainable – both in logistics and manufacturing operations.

SICK combines sensor intelligence with industry expertise and certified consulting services. We provide the ideal foundation for scalable as well as tailor-made automation solutions and create added value along the entire value chain. Our close partnerships with our customers are more than just a promise: Together, we optimize productivity, improve quality, protect health and safety, and help build a sustainable future. All with empathy and trust.

Since 1946, we have been developing innovative technologies with passion and a pioneering spirit. With a global network in around 40 countries, SICK has a global presence and is always close by. The company's headquarters are located in Waldkirch near Freiburg, Germany. Our customers benefit from our understanding of both local and global requirements, which enables us to deliver tailor-made solutions

SICK
Sensor Intelligence