



# SAPP02D-06AP001

Safeguard Detector

SAFETY SYSTEMS FOR AUTOMATING MATERIAL FLOWS

**SICK**  
Sensor Intelligence.



## Ordering information

Type	Part no.
SAPP02D-06AP001	1065548

**Included in delivery:** SAPP02D-06A0001 (1), SYS/SGD-W4104020101FX3 (1), FX3-MPL000001 (1), FX3-CPU000000 (1), FX3-XTI084002 (1)

Other models and accessories → [www.sick.com/Safeguard\\_Detector](http://www.sick.com/Safeguard_Detector)



## Detailed technical data

Safety-related parameters of the safety system

<b>Category</b>	Category 3 (EN ISO 13849-1)
<b>Performance level</b>	PL d (EN ISO 13849-1)
<b>PFH<sub>D</sub> (mean probability of a dangerous failure per hour)</b>	$1.8 \times 10^{-7}$
<b>DC<sub>avg</sub> (diagnostic coverage)</b>	91 % (EN ISO 13849-1)
<b>MTTF<sub>D</sub> (mean time to dangerous failure)</b>	63 years (EN ISO 13849-1)

## Flexi Soft safety controller

<b>Note</b>	The Flexi Soft station has a modular design and can be customized based on the operator's requirements. At least one main module, the right system plug, and at least one I/O module must be used.
<b>Flexi Soft station construction</b>	Modular 1 main module 1 system plug 0 ... 2 gateways 1 ... 12 expansion modules
<b>Module interconnection</b>	Internal bus (FLEXBUS+)
<b>Configuration method</b>	Via software
Configuration software	Flexi Soft Designer
Example program	You can find an example application with the Safeguard Detector function block in the download area.
<b>Number of connectable sensor pairs</b>	Approx. 30 (depending on logic/number of logic modules used)
<b>Connection type</b>	Spring terminals
<b>Pulse rate of the sensors</b>	10 Hz
<b>Max. safety controller cycle time</b>	
Pulse rate 10 Hz	≤ 28 ms
Pulse rate 2 Hz	≤ 148 ms
<b>Supply voltage V<sub>S</sub></b>	24 V DC (16.8 V ... 30 V)
<b>Protection class</b>	III (EN 50178)
<b>Enclosure rating</b>	IP20 (EN 60529)
<b>Ambient operating temperature</b>	-25 °C ... 55 °C
<b>Fieldbus, industrial network</b>	CANopen, EtherCAT®, EtherNet/IP™, Modbus TCP, PROFIBUS DP, PROFINET, DeviceNet™

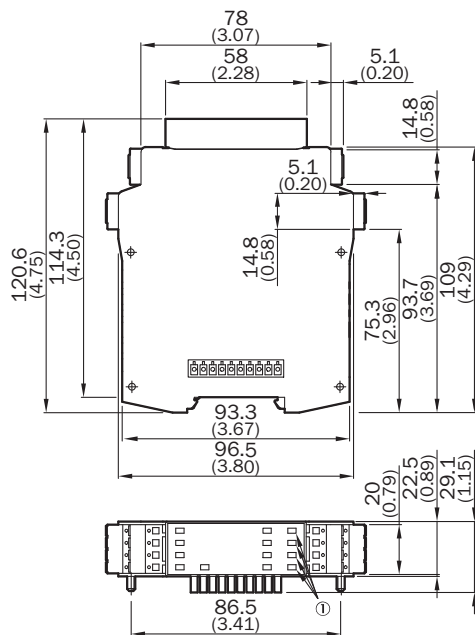
Type of fieldbus integration	Via gateway
------------------------------	-------------

## Classifications

<b>eCl@ss 5.0</b>	27279090
<b>eCl@ss 5.1.4</b>	27279090
<b>eCl@ss 6.0</b>	27279090
<b>eCl@ss 6.2</b>	27279090
<b>eCl@ss 7.0</b>	27279090
<b>eCl@ss 8.0</b>	27279090
<b>eCl@ss 8.1</b>	27279090
<b>eCl@ss 9.0</b>	27279090
<b>eCl@ss 10.0</b>	27279090
<b>eCl@ss 11.0</b>	27279090
<b>eCl@ss 12.0</b>	27279090
<b>ETIM 5.0</b>	EC001449
<b>ETIM 6.0</b>	EC001449
<b>ETIM 7.0</b>	EC001449
<b>ETIM 8.0</b>	EC001449
<b>UNSPSC 16.0901</b>	32151705

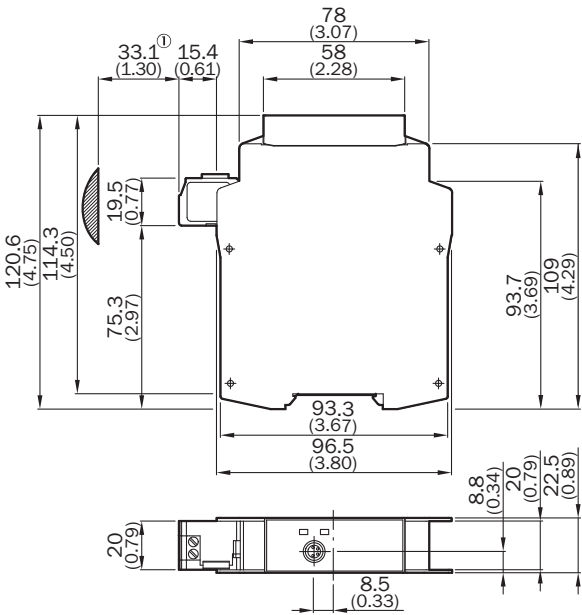
### Dimensional drawing (Dimensions in mm (inch))

FX3-XTIO, FX3-XTDI

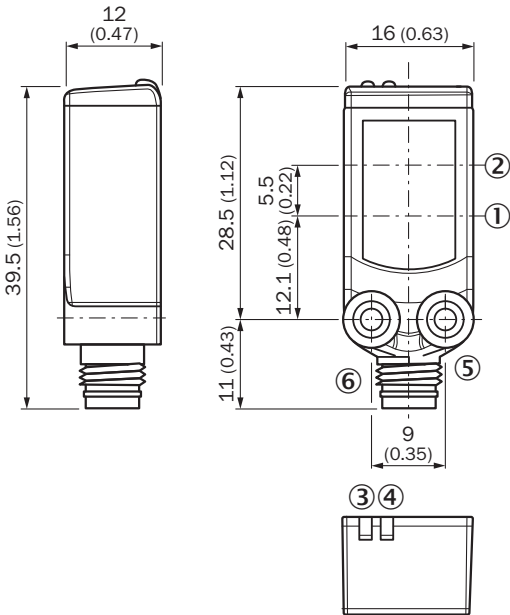


① Only valid for FX3-XTIO

FX3-CPU0



① Approximate connector range



## SICK AT A GLANCE

SICK is one of the leading manufacturers of intelligent sensors and sensor solutions for industrial applications. A unique range of products and services creates the perfect basis for controlling processes securely and efficiently, protecting individuals from accidents and preventing damage to the environment.

We have extensive experience in a wide range of industries and understand their processes and requirements. With intelligent sensors, we can deliver exactly what our customers need. In application centers in Europe, Asia and North America, system solutions are tested and optimized in accordance with customer specifications. All this makes us a reliable supplier and development partner.

Comprehensive services complete our offering: SICK LifeTime Services provide support throughout the machine life cycle and ensure safety and productivity.

**For us, that is “Sensor Intelligence.”**

## WORLDWIDE PRESENCE:

Contacts and other locations –[www.sick.com](http://www.sick.com)