



# SLT060-0B010J700

Optical signal transmitters

**SIGNAL TRANSMITTERS**

**SICK**  
Sensor Intelligence.



### Ordering information

Type	part no.
SLT060-0B010J700	6075938

Other models and accessories → [www.sick.com/Optical\\_signal\\_transmitters](http://www.sick.com/Optical_signal_transmitters)



### Detailed technical data

#### Features

<b>Product segment</b>	Signal transmitters
<b>Product</b>	Optical signal transmitters
<b>Product version</b>	SLT060
<b>Further functions</b>	IO-Link signal lamp Parameterization via IO-Link Simple configuration directly via the SOPAS ET user interface, the engineering tool from SICK
<b>Description</b>	IO-Link signal lamp
<b>Optical indicators</b>	1 LED green for IO-Link communication
<b>Dimmer function</b>	Yes
<b>Enclosure rating</b>	IP65
<b>Power consumption</b>	≤ 5 W
<b>Supply voltage</b>	18 V DC ... 30 V DC
<b>Operating temperature</b>	-25 °C ... +50 °C
<b>Storage temperature</b>	-30 °C ... +60 °C
<b>Weight</b>	590 g

#### Certificates

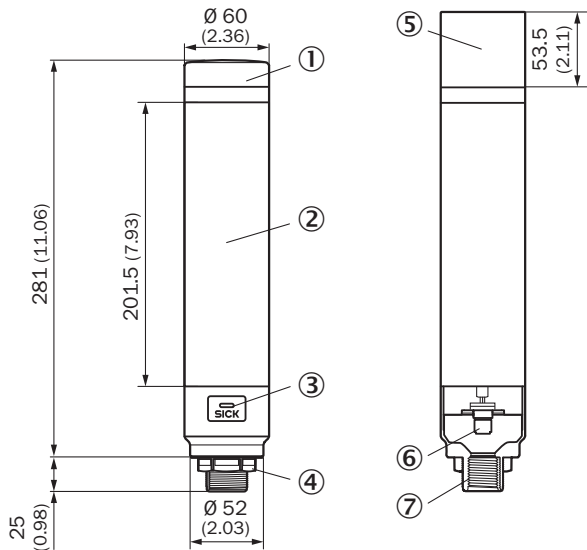
<b>EU declaration of conformity</b>	✓
<b>UK declaration of conformity</b>	✓
<b>ACMA declaration of conformity</b>	✓
<b>China RoHS</b>	✓
<b>cULus certificate</b>	✓

#### Classifications

<b>ECLASS 5.0</b>	27371220
<b>ECLASS 5.1.4</b>	27371220

<b>ECLASS 6.0</b>	27371220
<b>ECLASS 6.2</b>	27371220
<b>ECLASS 7.0</b>	27371220
<b>ECLASS 8.0</b>	27371220
<b>ECLASS 8.1</b>	27371220
<b>ECLASS 9.0</b>	27371220
<b>ECLASS 10.0</b>	27371220
<b>ECLASS 11.0</b>	27371220
<b>ECLASS 12.0</b>	27371220
<b>ETIM 5.0</b>	EC000232
<b>ETIM 6.0</b>	EC000232
<b>ETIM 7.0</b>	EC000232
<b>ETIM 8.0</b>	EC000232
<b>UNSPSC 16.0901</b>	39121107

Dimensional drawing



Dimensions in mm (inch)

- ① Cover
- ② LED segment display
- ③ IO-Link status LED
- ④ Fastening nuts (1 x); width across 46, polycarbonate (PC)
- ⑤ SLB060-0B010K700 buzzer (optional accessories)
- ⑥ IO-Link connection, male connector, M12, 5-pin
- ⑦ thread 1/2"

## SICK AT A GLANCE

SICK is one of the leading manufacturers of intelligent sensors and sensor solutions for industrial applications. A unique range of products and services creates the perfect basis for controlling processes securely and efficiently, protecting individuals from accidents and preventing damage to the environment.

We have extensive experience in a wide range of industries and understand their processes and requirements. With intelligent sensors, we can deliver exactly what our customers need. In application centers in Europe, Asia and North America, system solutions are tested and optimized in accordance with customer specifications. All this makes us a reliable supplier and development partner.

Comprehensive services complete our offering: SICK LifeTime Services provide support throughout the machine life cycle and ensure safety and productivity.

For us, that is “Sensor Intelligence.”

## WORLDWIDE PRESENCE:

Contacts and other locations –[www.sick.com](http://www.sick.com)