



WFL80-40B41CA00

WFL

FORK SENSORS

SICK
Sensor Intelligence.



Illustration may differ



Ordering information

| Type | part no. |
|-----------------|----------|
| WFL80-40B41CA00 | 6058625 |

Other models and accessories → www.sick.com/WFL

Detailed technical data

Features

| | |
|--|--|
| Functional principle | Optical detection principle |
| Dimensions (W x H x D) | 10 mm x 118.5 mm x 47 mm |
| Fork width | 80 mm |
| Fork depth | 42 mm |
| Light source | Laser, visible red light |
| Minimum detectable object (MDO) | 0.05 mm |
| Adjustment | Teach-in button, cable (Teach-in, sensitivity, light/dark switching, key lock, Teach-in dynamic) |
| Teach-in mode | 1-point teach-in 2-point teach-in Teach-in dynamic |
| Safety-related parameters | |
| | MTTF _D 80 years |
| | DC _{avg} 0 % |

Interfaces

| | |
|---------------------------------|--|
| IO-Link | ✓ , IO-Link V1.1 |
| VendorID | 26 |
| DeviceID HEX | 8000AE |
| DeviceID DEC | 8388782 |
| Cycle time | 2.3 ms |
| Process data structure A | Bit 0 = switching signal Q _{L1} Bit 1 = switching signal Q _{L2} Bit 2 = not used |

| | |
|---------------------------------|---|
| | Bit 3 = Teach busy Bit 4 ... 15 = empty |
| Process data structure B | Bit 0 = switching signal Q_{L1} Bit 1 = Quality of Run Alarm Bit 2 = not used Bit 3 = Teach busy Bit 4 ... 15 = empty |
| Process data structure C | Bit 0 = switching signal Q_{L1} Bit 1 = switching signal Q_{L2} Bit 2 = not used Bit 3 = Teach busy Bit 4 ... 5 = empty Bit 6 ... 15 = measuring value |
| Process data structure D | Bit 0 = switching signal Q_{L1} Bit 1 = Quality of Run Alarm Bit 2 = not used Bit 3 = Teach busy Bit 4 ... 5 = empty Bit 6 ... 15 = measuring value |

Electronics

| | |
|--|---|
| Supply voltage | 10 V DC ... 30 V DC |
| Ripple | < 10 % |
| Current consumption | 40 mA ¹⁾ |
| Initialization time | 40 ms |
| Switching frequency | 11 kHz |
| Response time | ≤ 60 μs |
| Stability of response time | ± 20 μs |
| Jitter | 22 μs |
| Switching output | Push-pull: PNP/NPN |
| Switching output (voltage) | Push-pull: PNP/NPN High = $U_V - < 2$ V/Low: ≤ 2 V |
| Switching mode | Light/dark switching |
| Output current I_{max} | 100 mA |
| Input, teach-in (ET) | Teach: $U > 5$ V ... < U_V Run: $U < 4$ V |
| Time delay | Switch-off delay, 0 ms / 8 ms / 16 ms / 32 ms / 65 ms / 130 ms / 260 ms / 520 ms, adjustable via IO-Link (0 ms = default) |
| Protection class | III ²⁾ |
| Circuit protection | U_V connections, reverse polarity protected Output Q short-circuit protected Interference pulse suppression |
| Connection type | Male connector M8, 4-pin |

¹⁾ Without load.

²⁾ Reference voltage DC 50 V.

Mechanics

| | |
|-------------------------|----------|
| Housing material | Aluminum |
|-------------------------|----------|

¹⁾ Depending on fork width.

| | |
|---------------|--------------------------------------|
| Weight | Approx. 36 g ... 160 g ¹⁾ |
|---------------|--------------------------------------|

¹⁾ Depending on fork width.

Ambient data

| | |
|--------------------------------------|----------------------------|
| Ambient operating temperature | -20 °C ... +50 °C |
| Ambient temperature, storage | -30 °C ... +80 °C |
| Ambient light immunity | ≤ 10,000 lx |
| Shock load | According to EN 60068-2-27 |
| Enclosure rating | IP65 |
| UL File No. | E191603 |

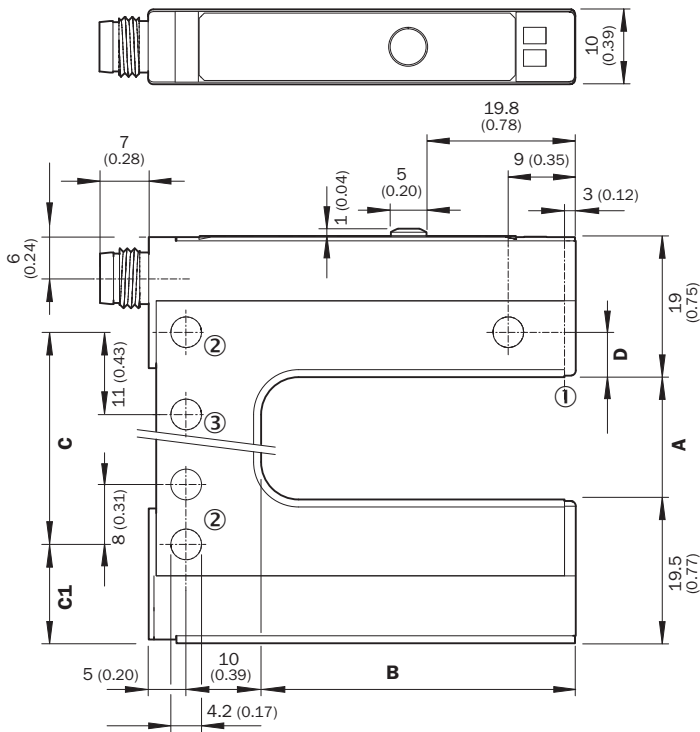
Certificates

| | |
|--|---|
| EU declaration of conformity | ✓ |
| UK declaration of conformity | ✓ |
| ACMA declaration of conformity | ✓ |
| Moroccan declaration of conformity | ✓ |
| China RoHS | ✓ |
| cULus certificate | ✓ |
| IO-Link certificate | ✓ |
| Laser safety (IEC 60825-1) declaration of manufacturer | ✓ |
| Information according to Art. 3 of Data Act (Regulation EU 2023/2854) | ✓ |

Classifications

| | |
|-----------------------|----------|
| ECLASS 5.0 | 27270909 |
| ECLASS 5.1.4 | 27270909 |
| ECLASS 6.0 | 27270909 |
| ECLASS 6.2 | 27270909 |
| ECLASS 7.0 | 27270909 |
| ECLASS 8.0 | 27270909 |
| ECLASS 8.1 | 27270909 |
| ECLASS 9.0 | 27270909 |
| ECLASS 10.0 | 27270909 |
| ECLASS 11.0 | 27270909 |
| ECLASS 12.0 | 27270909 |
| ETIM 5.0 | EC002720 |
| ETIM 6.0 | EC002720 |
| ETIM 7.0 | EC002720 |
| ETIM 8.0 | EC002720 |
| UNSPSC 16.0901 | 39121528 |

Dimensional drawing WFL teach-in button



Dimensions in mm (inch)

| | A | B | C |
|--------|-----------------------|---------------------------|------------|
| | Gabelweite/Fork width | Gabeltiefe/Fork depth | |
| WFL2 | 2 (0.08) | 42/59/95 (1.65/2.32/3.74) | 14 (0.55) |
| WFL5 | 5 (0.20) | 42/59/95 (1.65/2.32/3.74) | 14 (0.55) |
| WFL15 | 15 (0.59) | 42/59/95 (1.65/2.32/3.74) | 27 (1.06) |
| WFL30 | 30 (1.18) | 42/59/95 (1.65/2.32/3.74) | 42 (1.65) |
| WFL50 | 50 (1.97) | 42/59/95 (1.65/2.32/3.74) | 51 (2.01) |
| WFL80 | 80 (3.15) | 42/59/95 (1.65/2.32/3.74) | 81 (3.19) |
| WFL120 | 120 (4.72) | 42/59/95 (1.65/2.32/3.74) | 121 (4.76) |

| | C1 | D |
|--------|-------------|------------|
| WFL2 | 13.5 (0.53) | 6 (0.24) |
| WFL5 | 15 (0.59) | 4.5 (0.17) |
| WFL15 | 13.5 (0.53) | 6 (0.24) |
| WFL30 | 13.5 (0.53) | 6 (0.24) |
| WFL50 | 24.5 (0.96) | 6 (0.24) |
| WFL80 | 24.5 (0.96) | 6 (0.24) |
| WFL120 | 24.5 (0.96) | 6 (0.24) |

Dimensions in mm (inch)

- ① Optical axis
- ② Mounting hole, Ø 4.2 mm
- ③ WFL50/80/120 only

Adjustments Adjustment: teach-in via Teach-in button (WFxx-B41Cxx)



- ① Function signal indicator (yellow), switching output
- ② Function signal indicator (green)
- ③ Teach-in button and function button

Connection diagram Cd-273



Concept of operation Teach-in via Teach-in button (WFxx-B41Cxx)

1. Start teach-in: Position the background or object between the fork



Press the teach-in button for 3 - 20 s. With the pushbutton pressed down, move several objects with carrier material (label objects to be detected) through the sensor. The yellow LED flashes at 3 Hz during the teach-in procedure. Recommendation: Move at least 3 objects through the sensor.

2. End teach-in:



Release the teach-in button for < 20 s. If teach-in is successful, the function indicator (yellow LED) directly indicates the output state of the sensor. The switching threshold is now optimally set between background and object. The best possible operational safety is provided.

Note

Fine adjustment

In order to obtain a higher operating reserve, a fine adjustment can be carried out after successful teach-in. For this purpose, the switching threshold is set close to the taught-in object. The teach-in button must be pressed and released within 10 s of successful teach-in. Successful setting is signaled by flashing twice at 1 Hz.

Light/dark switching







- You can change between light switching and dark switching by pressing the teach-in button for 20 - 30 s.

Pushbutton lock

- The device can be locked against unintended operation by pressing the teach-in button for > 30 s. The device can be unlocked by pressing the teach-in button again for > 30 s.

Recommended accessories

Other models and accessories → www.sick.com/WFL

| | Brief description | Type | part no. |
|---|---|--------------------------------|----------|
| connectors and cables | | | |
|  | <ul style="list-style-type: none"> Description: Unshielded Connection type head A: Male connector, M8, 4-pin, straight, A-coded Connection systems: Screw-type terminals Permitted cross-section: 0.14 mm² ... 0.5 mm² | STE-0804-G | 6037323 |
|  | <ul style="list-style-type: none"> Description: Sensor/actuator cable, unshielded Connection type head A: Female connector, M8, 4-pin, straight, A-coded Connection type head B: Flying leads Signal type: Sensor/actuator cable Cable: 5 m, 4-wire, PVC Application: Uncontaminated zones, Zones with chemicals | YF8U14-050VA3XLEAX | 2095889 |
|  | <ul style="list-style-type: none"> Description: Sensor/actuator cable, unshielded Connection type head A: Female connector, M8, 4-pin, straight, A-coded Connection type head B: Male connector, M12, 4-pin, straight, A-coded Signal type: Sensor/actuator cable Cable: 5 m, 4-wire, PVC Application: Uncontaminated zones, Zones with chemicals | YF8U14-050VA3M2A14 | 2096609 |
| network devices | | | |
|  | | IOLA2US-01101 (SiLink2 Master) | 1061790 |
|  | | SIG200-0A0412200 | 1089794 |
|  | | SIG200-0A0G12200 | 1102605 |

SICK AT A GLANCE

SICK is one of the leading manufacturers of intelligent sensors and sensor solutions for industrial applications. A unique range of products and services creates the perfect basis for controlling processes securely and efficiently, protecting individuals from accidents and preventing damage to the environment.

We have extensive experience in a wide range of industries and understand their processes and requirements. With intelligent sensors, we can deliver exactly what our customers need. In application centers in Europe, Asia and North America, system solutions are tested and optimized in accordance with customer specifications. All this makes us a reliable supplier and development partner.

Comprehensive services complete our offering: SICK LifeTime Services provide support throughout the machine life cycle and ensure safety and productivity.

For us, that is “Sensor Intelligence.”

WORLDWIDE PRESENCE:

Contacts and other locations –www.sick.com