



# IM30-15NDS-ZW1

IM Standard

INDUCTIVE PROXIMITY SENSORS

**SICK**  
Sensor Intelligence.



Illustration may differ



### Ordering information

| Type           | part no. |
|----------------|----------|
| IM30-15NDS-ZW1 | 6020330  |

Other models and accessories → [www.sick.com/IM\\_Standard](http://www.sick.com/IM_Standard)

### Detailed technical data

#### Features

|  |                    |
|--|--------------------|
| <b>Housing</b>                             | Metric             |
| <b>Housing</b>                             | Standard design    |
| <b>Thread size</b>                         | M30 x 1.5          |
| <b>Diameter</b>                            | Ø 30 mm            |
| <b>Sensing range <math>S_n</math></b>      | 15 mm              |
| <b>Safe sensing range <math>S_a</math></b> | 12.15 mm           |
| <b>Installation type</b>                   | Non-flush          |
| <b>Switching frequency</b>                 | 150 Hz             |
| <b>Connection type</b>                     | Cable, 2-wire, 2 m |
| <b>Output function</b>                     | NO                 |
| <b>Electrical wiring</b>                   | DC 2-wire          |
| <b>Enclosure rating</b>                    | IP67 <sup>1)</sup> |

<sup>1)</sup> According to EN 60529.

#### Mechanics/electronics

|  |                                      |
|--|--------------------------------------|
| <b>Supply voltage</b>                          | 10 V DC ... 30 V DC                  |
| <b>Ripple</b>                                  | ≤ 10 %                               |
| <b>Voltage drop</b>                            | ≤ 2.8 V <sup>1)</sup>                |
| <b>Time delay before availability</b>          | ≤ 50 ms                              |
| <b>Hysteresis</b>                              | 2 % ... 10 %                         |
| <b>Reproducibility</b>                         | ≤ 2 % <sup>2)</sup><br><sup>3)</sup> |
| <b>Temperature drift (of <math>S_r</math>)</b> | ± 10 %                               |
| <b>EMC</b>                                     | According to EN 60947-5-2            |

<sup>1)</sup> At  $I_a$  max.

<sup>2)</sup> Supply voltage  $U_B$  and constant ambient temperature  $T_a$ .

<sup>3)</sup> Of  $S_r$ .

|  |                                  |
|--|----------------------------------|
| <b>Continuous current <math>I_a</math></b> | ≤ 100 mA                         |
| <b>Off-state current</b>                   | ≤ 0.8 mA                         |
| <b>Minimum load current</b>                | ≥ 3 mA                           |
| <b>Cable material</b>                      | PVC                              |
| <b>Conductor size</b>                      | 0.34 mm <sup>2</sup>             |
| <b>Short-circuit protection</b>            | ✓                                |
| <b>Shock and vibration resistance</b>      | 30 g, 11 ms / 10 ... 55 Hz, 1 mm |
| <b>Ambient operating temperature</b>       | -25 °C ... +70 °C                |
| <b>Housing material</b>                    | Brass, Nickel-plated brass       |
| <b>Sensing face material</b>               | Plastic                          |
| <b>Housing length</b>                      | 60 mm                            |
| <b>Thread length</b>                       | 38 mm                            |
| <b>Tightening torque, max.</b>             | 60 Nm                            |

<sup>1)</sup> At  $I_a$  max.

<sup>2)</sup> Supply voltage  $U_B$  and constant ambient temperature  $T_a$ .

<sup>3)</sup> Of  $S_r$ .

### Reduction factors

|                                   |  |
|-----------------------------------|--|
| <b>Note</b>                       | The values are reference values which may vary |
| <b>Stainless steel (V2A, 304)</b> | Approx. 0.8                                    |
| <b>Aluminum (Al)</b>              | Approx. 0.5                                    |
| <b>Copper (Cu)</b>                | Approx. 0.45                                   |
| <b>Brass (Br)</b>                 | Approx. 0.55                                   |

### Installation note

|               |                                       |
|---------------|---------------------------------------|
| <b>Remark</b> | Associated graphic see "Installation" |
| <b>A</b>      | 15 mm                                 |
| <b>B</b>      | 45 mm                                 |
| <b>C</b>      | 30 mm                                 |
| <b>D</b>      | 45 mm                                 |
| <b>E</b>      | 18 mm                                 |
| <b>F</b>      | 120 mm                                |

### Certificates

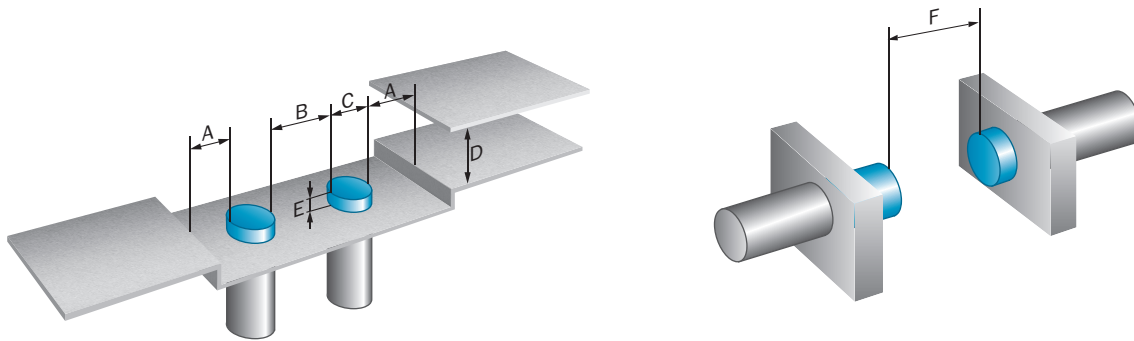
|   |   |
|---|---|
| <b>EU declaration of conformity</b>       | ✓ |
| <b>UK declaration of conformity</b>       | ✓ |
| <b>Moroccan declaration of conformity</b> | ✓ |
| <b>China RoHS</b>                         | ✓ |

### Classifications

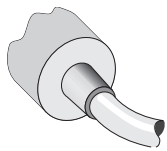
|                     |          |
|---------------------|----------|
| <b>ECLASS 5.0</b>   | 27270101 |
| <b>ECLASS 5.1.4</b> | 27270101 |
| <b>ECLASS 6.0</b>   | 27270101 |
| <b>ECLASS 6.2</b>   | 27270101 |
| <b>ECLASS 7.0</b>   | 27270101 |

|                       |          |
|-----------------------|----------|
| <b>ECLASS 8.0</b>     | 27270101 |
| <b>ECLASS 8.1</b>     | 27270101 |
| <b>ECLASS 9.0</b>     | 27270101 |
| <b>ECLASS 10.0</b>    | 27270101 |
| <b>ECLASS 11.0</b>    | 27270101 |
| <b>ECLASS 12.0</b>    | 27274001 |
| <b>ETIM 5.0</b>       | EC002714 |
| <b>ETIM 6.0</b>       | EC002714 |
| <b>ETIM 7.0</b>       | EC002714 |
| <b>ETIM 8.0</b>       | EC002714 |
| <b>UNSPSC 16.0901</b> | 39122230 |

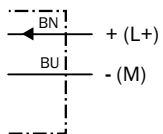
### Installation note Non-flush installation



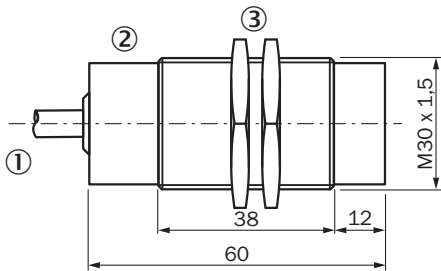
### Connection type



### Connection diagram Cd-012



Dimensional drawing IM30, DC 2-wire, cable, non-flush







Dimensions in mm (inch)

- ① Connection
- ② Display LED
- ③ Fastening nuts (2x); width across 36, metal

Recommended accessories

Other models and accessories → [www.sick.com/IM\\_Standard](http://www.sick.com/IM_Standard)

|   | Brief description  | Type        | part no. |
|---|--|-------------|----------|
| <b>Mounting systems</b>   |  |             |          |
|   | <ul style="list-style-type: none"> <li>• <b>Description:</b> Mounting plate for M30 sensors</li> <li>• <b>Material:</b> Steel</li> <li>• <b>Details:</b> Steel, zinc coated</li> <li>• <b>Items supplied:</b> Without mounting hardware</li> </ul>   | BEF-WG-M30  | 5321871  |
|  | <ul style="list-style-type: none"> <li>• <b>Description:</b> Mounting bracket for M30 sensors</li> <li>• <b>Material:</b> Steel</li> <li>• <b>Details:</b> Steel, zinc coated</li> <li>• <b>Items supplied:</b> Without mounting hardware</li> </ul>   | BEF-WN-M30  | 5308445  |
|  | <ul style="list-style-type: none"> <li>• <b>Description:</b> Plate N10 for universal clamp bracket, M30</li> <li>• <b>Material:</b> Steel, zinc diecast</li> <li>• <b>Details:</b> Zinc plated steel (sheet), Zinc die cast (clamping bracket)</li> <li>• <b>Items supplied:</b> Universal clamp (5322626), mounting hardware</li> <li>• <b>Usable for:</b> M30 round sensors</li> </ul> | BEF-KHS-N10 | 2062372  |
| <b>connectors and cables</b>  |  |             |          |
|  | <ul style="list-style-type: none"> <li>• <b>Connection type head A:</b> Male connector, M8, 3-pin, straight, A-coded</li> <li>• <b>Description:</b> Unshielded</li> <li>• <b>Connection systems:</b> Screw-type terminals</li> <li>• <b>Permitted cross-section:</b> 0.14 mm² ... 0.5 mm²</li> </ul>   | STE-0803-G  | 6037322  |

## SICK AT A GLANCE

SICK is one of the leading manufacturers of intelligent sensors and sensor solutions for industrial applications. A unique range of products and services creates the perfect basis for controlling processes securely and efficiently, protecting individuals from accidents and preventing damage to the environment.

We have extensive experience in a wide range of industries and understand their processes and requirements. With intelligent sensors, we can deliver exactly what our customers need. In application centers in Europe, Asia and North America, system solutions are tested and optimized in accordance with customer specifications. All this makes us a reliable supplier and development partner.

Comprehensive services complete our offering: SICK LifeTime Services provide support throughout the machine life cycle and ensure safety and productivity.

For us, that is “Sensor Intelligence.”

## WORLDWIDE PRESENCE:

Contacts and other locations –[www.sick.com](http://www.sick.com)