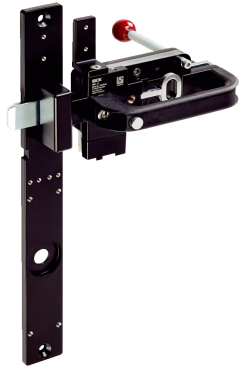


MB1

Rugged mechanical bolt for safety switches

SICK
Sensor Intelligence.



Technical data overview

Installation tolerance (horizontal)	3 mm ... 30 mm
Model	
Catch release button/ANSI-compliant locking mechanism	✓ / - (depending on type)
Escape release	- / ✓ (depending on type)
Frame plate with latching function	- / ✓ (depending on type)
Suitable for	flexLock safety locking device i10 Lock safety locking device i110 Lock safety locking device TR110 Lock safety locking device RE1 non-contact safety switch STR1 non-contact safety switch TR10 Lock safety locking device (depending on type)

Product description

The MB1 mechanical bolt is the ideal addition to non-contact safety switches and safety locking devices from SICK. Precise guiding of the actuator increases the tolerance to door offset and ensures correct functioning of an installed safety switch at all times. In addition, a mechanical bolt effectively prevents actuator breakage. The fault exclusion realized in this way enables a high performance level for the overall structure. Additional options such as a mechanical lock with padlock receptacle lock or an emergency release reliably protect maintenance staff from accidental entrapment.

At a glance

- Rugged design
- Variants with ANSI-compliant locking mechanism
- Standardized frame plates suitable for many safety switches from SICK
- Horizontal installation tolerance of 27 mm
- Compensation of vertical door offset up to ± 7 mm
- Variants with catch release button and emergency release

Your benefits

- Reliable and cost-optimized solution for door locking
- Increased productivity thanks to the rugged design and protection of the sensor
- High performance level due to fault exclusion, prevents actuator breakage
- Flexible mounting: Bolt can be used for right- or left-hinged doors
- Protection of employees from accidental entrapment thanks to locking function with padlock
- Protection from unwanted actuation for variants with catch release button

Fields of application

- Protection of persons in the event of the machine making dangerous overrun movements
- Applications with high requirements on a rugged design
- Applications which require high tolerance to door offset
- Door protection on strongly vibrating machines

Ordering information

Other models and accessories → www.sick.com/MB1

- **Suitable for:** flexLock safety locking device (with actuator FXL-AR1)

Description	Catch release button/ANSI-compliant locking mechanism	Escape release	Items supplied	Type	Part no.
Complete set consisting of door bolt-ing unit with frame plate for flexLock and adapters for actuators	✓	–	Frame plate flexLock, adapter for actuator mounting (MB1-BRFL), adapter for actuator mounting (MB1-BRFL), safety screws for installing provided adapters, Mounting instructions	MB1-BF10	1111207
Complete set consisting of bolt unit with frame plate for flexLock and adapters for actuators	✓	✓	Bolt unit, frame plate flexLock, adapter for actuator mounting (MB1-BRFL), safety screws for installing provided adapters, Mounting instructions, escape release	MB1-BF11	1111206

- **Suitable for:** i10 Lock safety switch with locking function (with iE10-S4 actuator), i110 Lock (with iE15-S1 actuator), TR110 Lock (with TR110-XAS actuator)

Description	Catch release button/ANSI-compliant locking mechanism	Items supplied	Type	Part no.
Complete set consisting of bolt unit with long frame plate and adapters for actuators	✓	Bolt unit, long frame plate, adapters for actuator mounting (MB1-BRLK, MB1-BRNC), safety screws for installing provided adapters, Mounting instructions	MB1-BL10	1091789
	–		MB1-BL00	1091788

- **Suitable for:** TR110 Lock safety locking device (with TR110-XAS actuator)

Description	Catch release button/ANSI-compliant locking mechanism	Escape release	Items supplied	Type	Part no.
Complete set consisting of bolt unit with long frame plate and adapters for actuators	✓	✓	Bolt unit, long frame plate, adapters for actuator mounting (MB1-BRLK, MB1-BRNC), safety screws for installing provided adapters, Mounting instructions, escape release	MB1-BL11	1091790

• **Suitable for:** RE1, STR1 non-contact safety switches

Description	Catch release button/ANSI-compliant locking mechanism	Escape release	Frame plate with latching function	Items supplied	Type	Part no.
Complete set consisting of bolt unit with short frame plate and adapters for actuators	✓	✓	✓	Bolt unit, short frame plate, adapter for actuator mounting (MB1-BRNC), safety screws for installing provided adapters, Mounting instructions, escape release	MB1-BS21	1110748
			–		MB1-BS11	1091786
	–	–	–	Bolt unit, short frame plate, adapter for actuator mounting (MB1-BRNC), safety screws for installing provided adapters, Mounting instructions	MB1-BS10	1091785
		–	–		MB1-BS00	1091286

• **Suitable for:** TR10 Lock safety locking device

Description	Catch release button/ANSI-compliant locking mechanism	Frame plate with latching function	Items supplied	Type	Part no.
Complete set consisting of bolt unit with frame plate for TR10 Lock and adapters for actuators	✓	✓	Bolt unit, frame plate TR10 Lock, adapter for actuator mounting (MB1-BRTR), safety screws for installing provided adapters, Mounting instructions	MB1-BT20	1110750
		–		MB1-BT10	1091793
	–	–	Frame plate TR10 Lock, adapter for actuator mounting (MB1-BRTR), adapter for actuator mounting (MB1-BRTR), safety screws for installing provided adapters, Mounting instructions	MB1-BT00	1091792

SICK AT A GLANCE

SICK is one of the leading manufacturers of intelligent sensors and sensor solutions for industrial applications. A unique range of products and services creates the perfect basis for controlling processes securely and efficiently, protecting individuals from accidents and preventing damage to the environment.

We have extensive experience in a wide range of industries and understand their processes and requirements. With intelligent sensors, we can deliver exactly what our customers need. In application centers in Europe, Asia and North America, system solutions are tested and optimized in accordance with customer specifications. All this makes us a reliable supplier and development partner.

Comprehensive services complete our offering: SICK LifeTime Services provide support throughout the machine life cycle and ensure safety and productivity.

For us, that is “Sensor Intelligence.”

WORLDWIDE PRESENCE:

Contacts and other locations –www.sick.com